



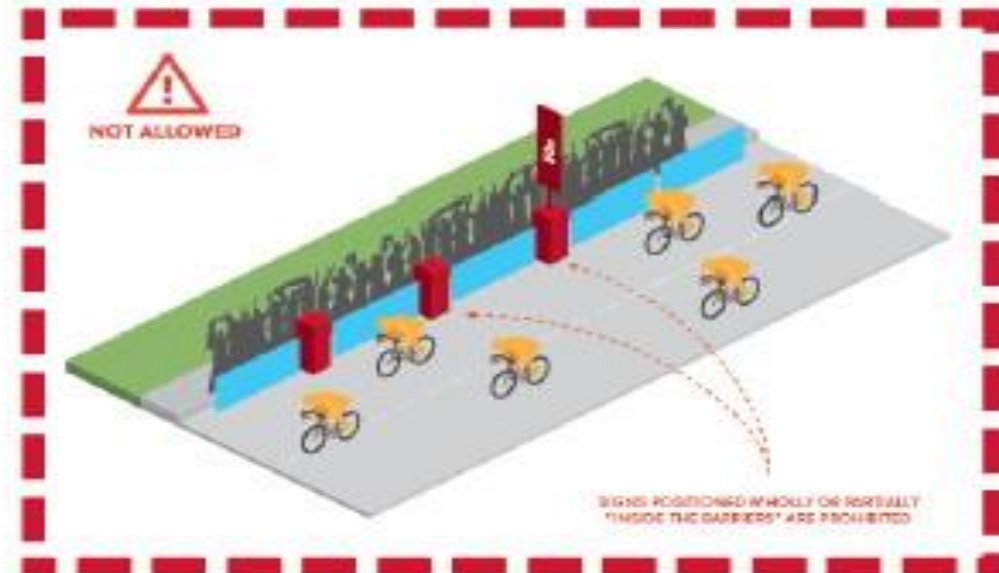
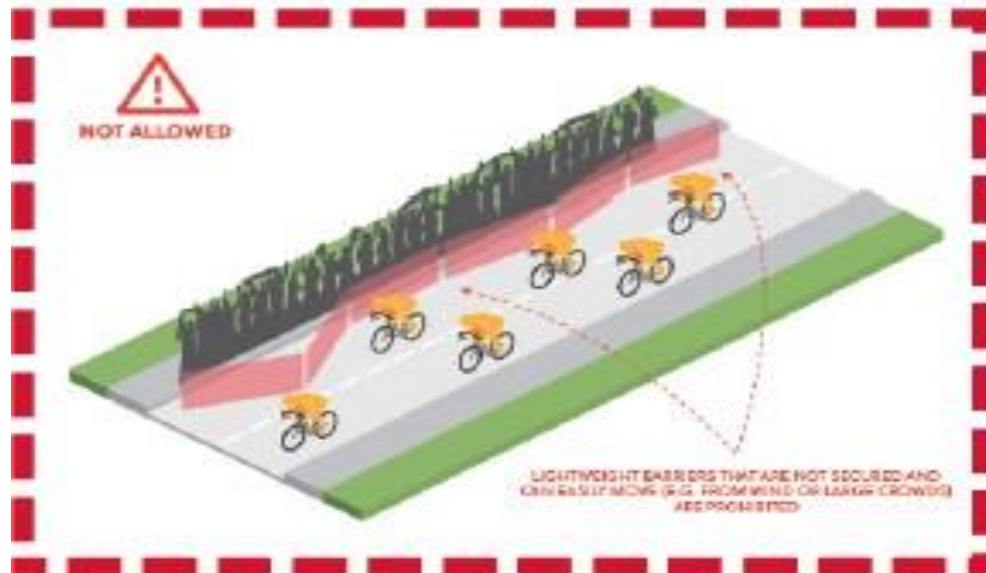
**AUSCYCLING
SAFETY
REGULATIONS**

JANUARY 2024

Organisation Regulation Changes – Course Safety

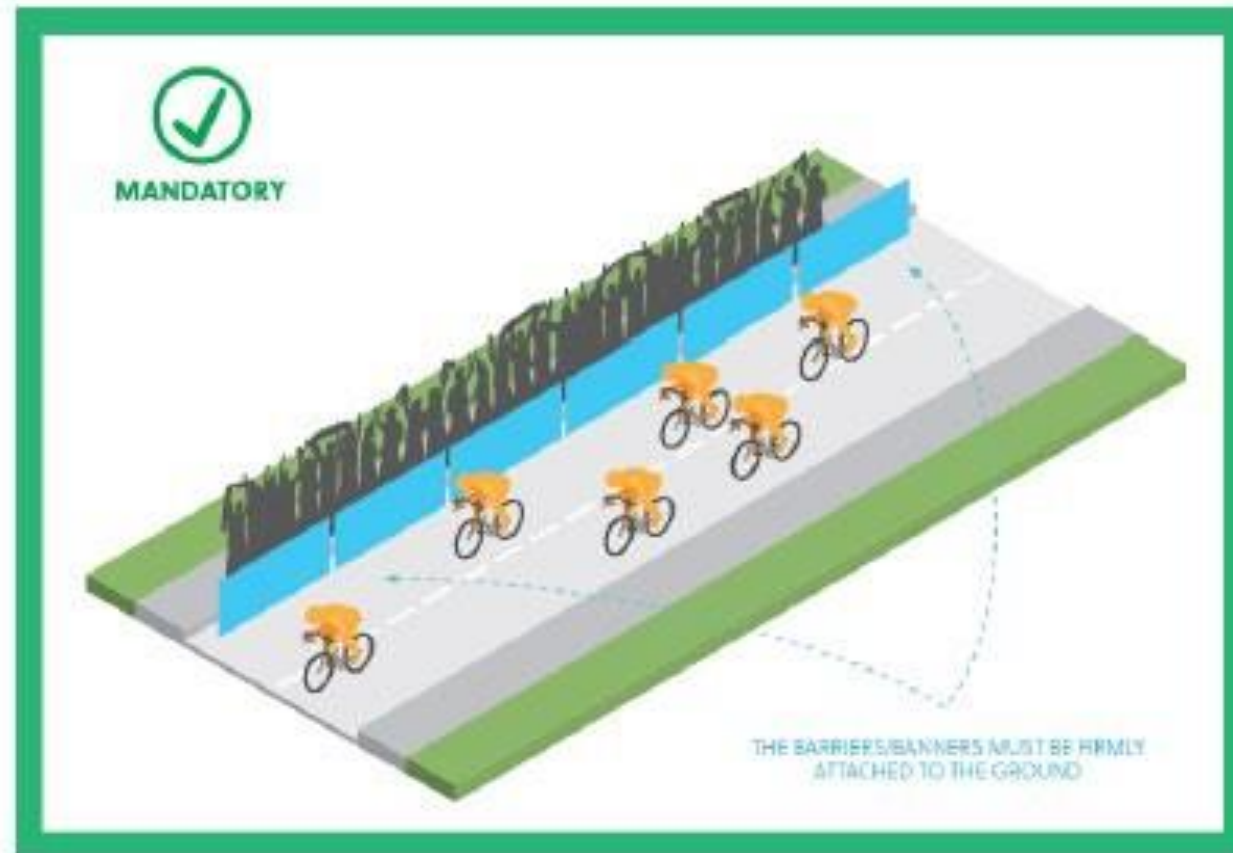
REGULATION CHANGES (APPLICABLE FROM 1ST APRIL) - UCI Regulations 2.2.017 and Specifications for organisers 4.4

Barriers are placed along sensitive sections of a race route in the interests of rider safety, although they may represent a danger if not installed if not installed correctly. These regulations aim to ensure the effectiveness of the barriers' role to enhance security.



REGULATION CHANGES (APPLICABLE FROM 1ST APRIL) - UCI Regulations 2.2.017 and Specifications for organisers 4.4

Barriers are placed along sensitive sections of a race route in the interests of rider safety, although they may represent a danger if not installed if not installed correctly. These regulations aim to ensure the effectiveness of the barriers' role to enhance security.



Organisation Regulation Changes – Finish Line

REGULATION CHANGES (APPLICABLE FROM 1ST APRIL) - UCI Regulations 2.2.017 and Specifications for organisers 4.4

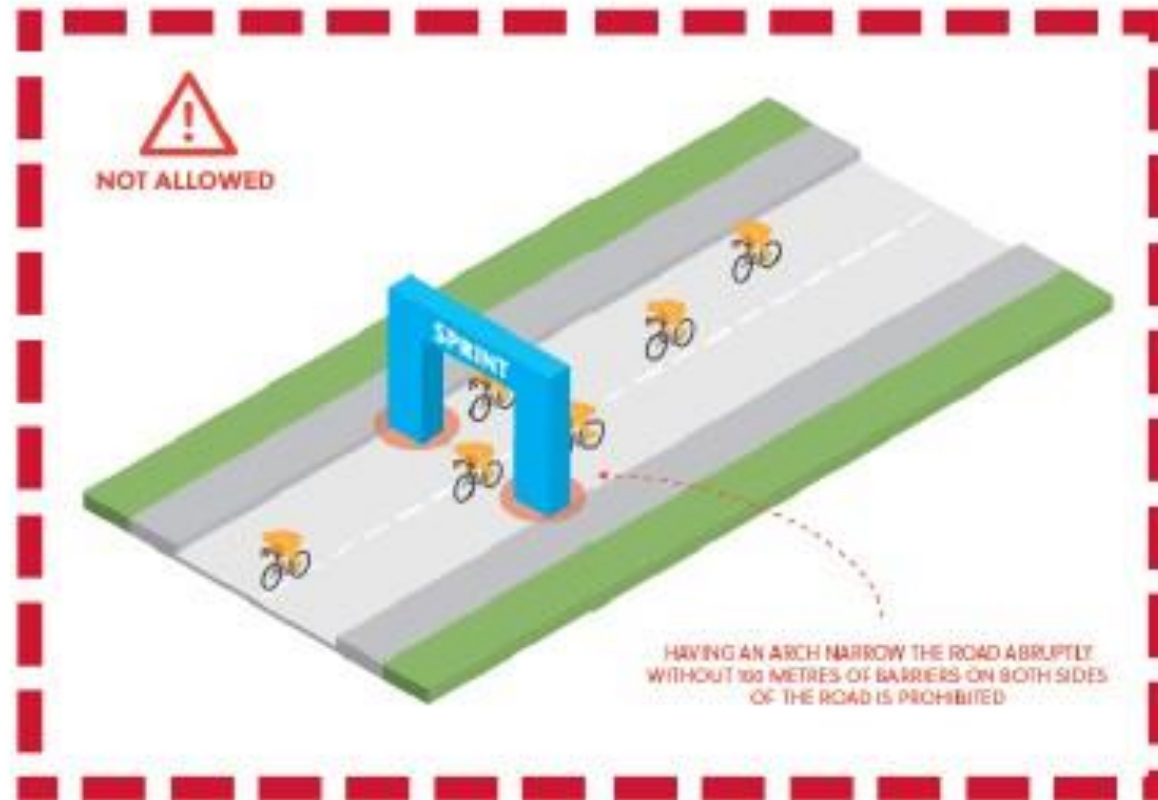
The finish area must be carefully prepared to make sure that all procedures run as smoothly as possible. The entire finish site must be organised in order to optimise the safety conditions.



Organisation Regulation Changes – Intermediate Arches

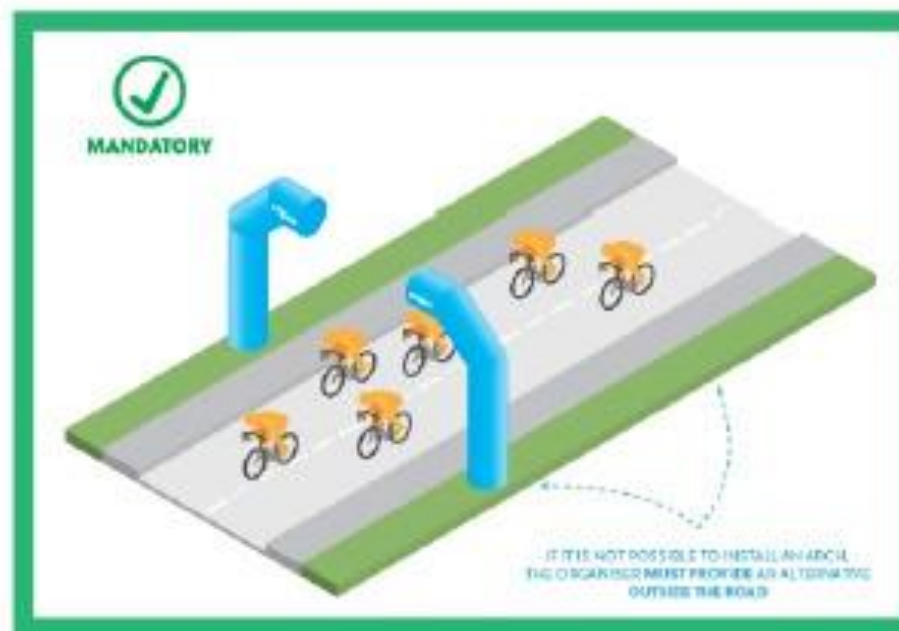
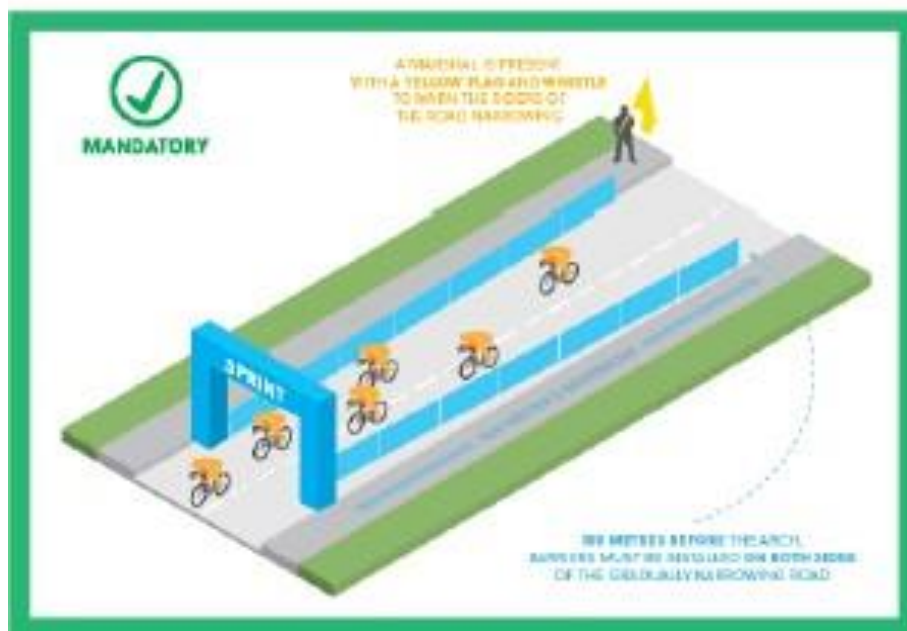
REGULATION CHANGES (APPLICABLE FROM 1ST APRIL) - Specifications for organisers 2.12

The use of arch structures across the road is allowed in order to indicate major sporting points (intermediate sprint, remaining distance to finish, etc.). However, these structures must at no time represent a danger to the riders and race followers. The installation of these structures must avoid any sudden narrowing of the available road width for the riders.

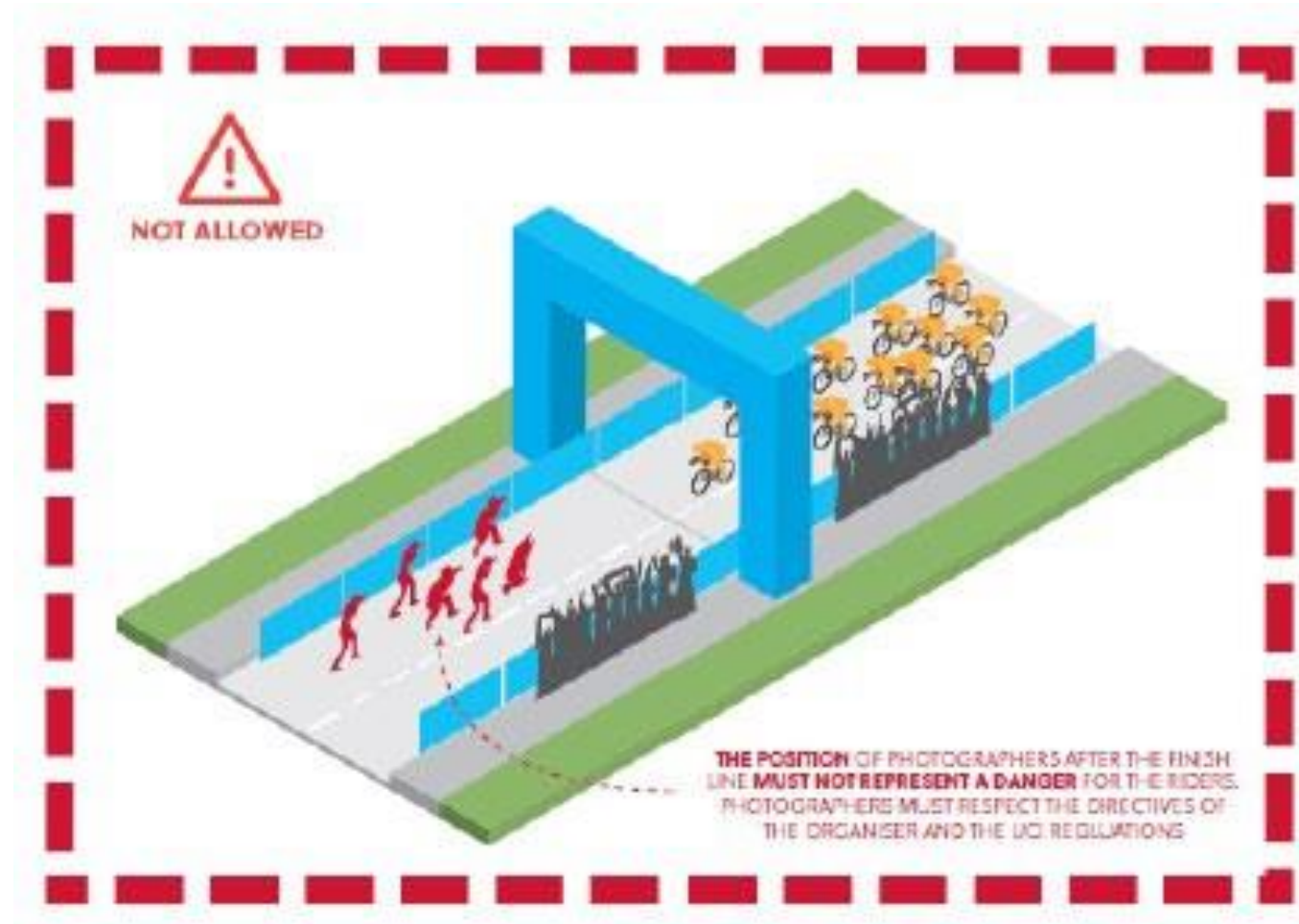


REGULATION CHANGES (APPLICABLE FROM 1ST APRIL) - Specifications for organisers 2.12

The use of arch structures across the road is allowed in order to indicate major sporting points (intermediate sprint, remaining distance to finish, etc.). However, these structures must at no time represent a danger to the riders and race followers. The installation of these structures must avoid any sudden narrowing of the available road width for the riders.



Organisation Regulation Changes - Photographers



Organisation Regulation Changes – Circulation During Race

REGULATION CHANGES (APPLICABLE FROM 1ST APRIL) - Guidelines for vehicle circulation in the race convoy 3.B and 3.F

The riders have **priority** in the race **at all times**. Furthermore, vehicles must generally respect a **safety distance** of at least **five metres** from riders in their vicinity unless otherwise provided that a greater distance is required. Additional requirements for vehicle positioning are defined in the regulations and guidelines for vehicle circulation in the race convoy.



Riders & Littering

REGULATION CHANGES (APPLICABLE FROM 1ST APRIL) - UCI Regulations 2.2.025 and 2.3.025

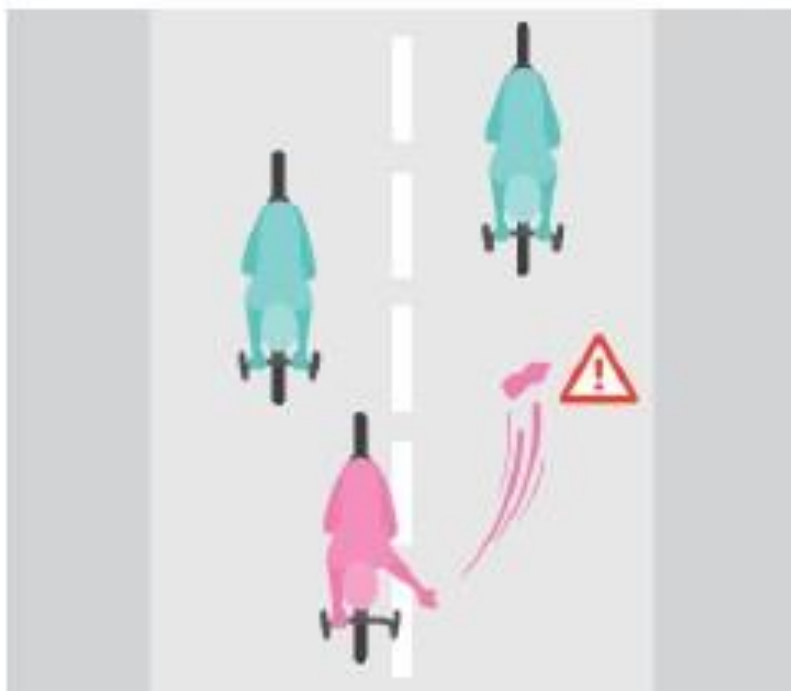
Quite apart from being potentially dangerous in certain situations, the discarding of litter and objects outside dedicated zones is harmful to the environment and to the image of our sport. It also sets a bad example to non-professional cyclists.



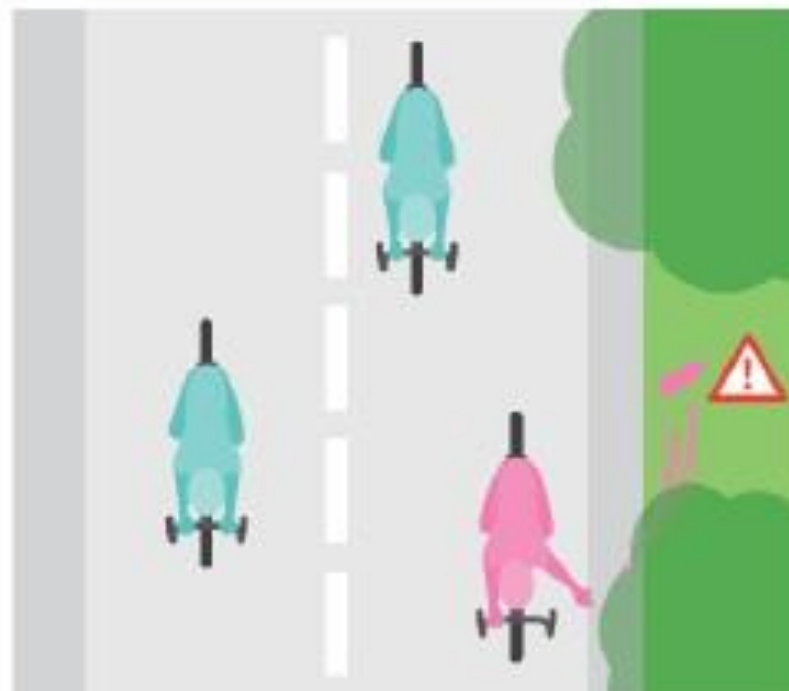
REGULATION CHANGES (APPLICABLE FROM 1ST APRIL) - UCI Regulations 2.2.025 and 2.3.025

Quite apart from being potentially dangerous in certain situations, the discarding of litter and objects outside dedicated zones is harmful to the environment and to the image of our sport. It also sets a bad example to non-professional cyclists.

Not Allowed Throwing objects in a careless and dangerous manner

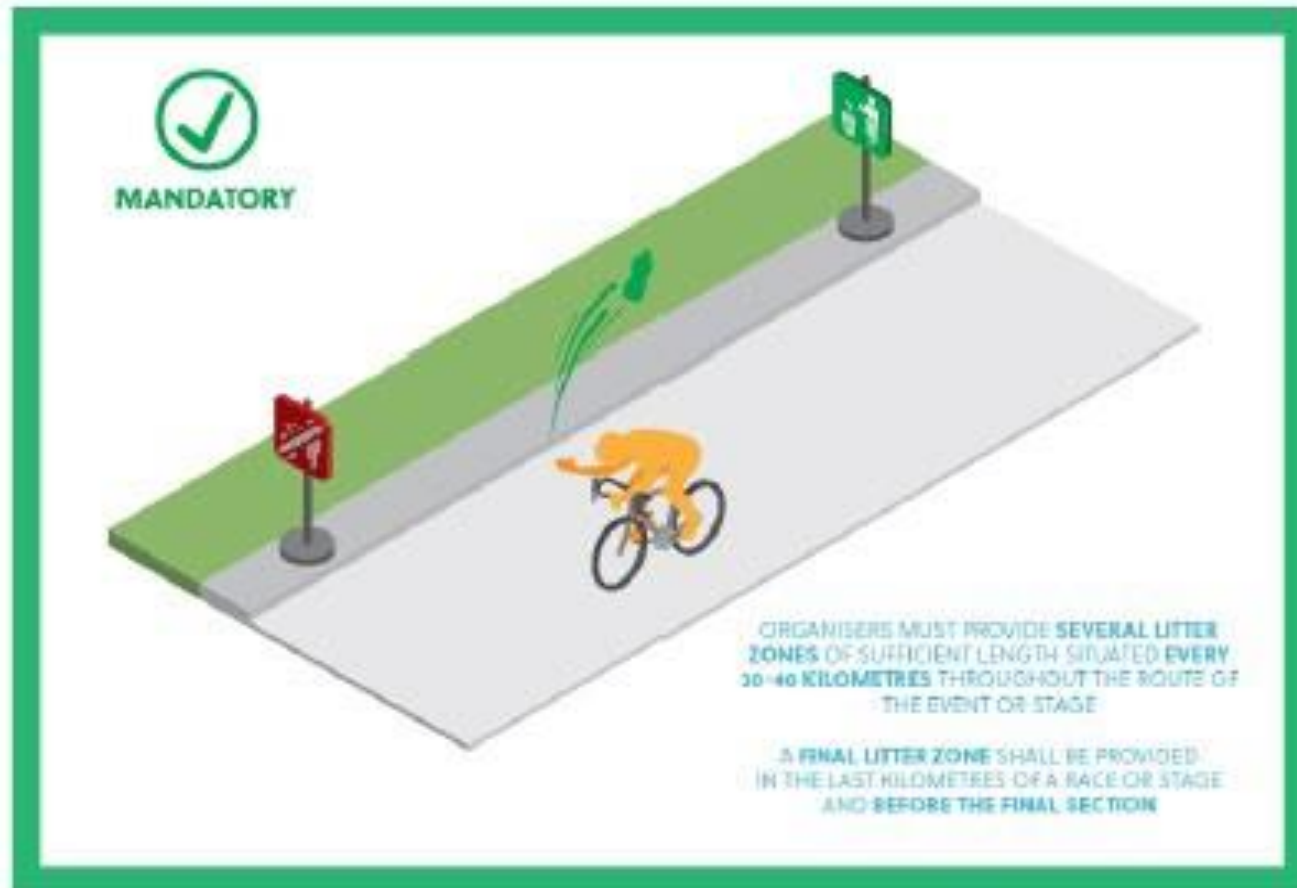


Not Allowed Throwing objects outside of litter zones



REGULATION CHANGES (APPLICABLE FROM 1ST APRIL) - UCI Regulations 2.2.025 and 2.3.025

Quite apart from being potentially dangerous in certain situations, the discarding of litter and objects outside dedicated zones is harmful to the environment and to the image of our sport. It also sets a bad example to non-professional cyclists.



Riders & Hazardous Positions

REGULATION CHANGES (APPLICABLE FROM 1ST APRIL) - UCI Regulations 2.2.025

To help ensure the safety of everyone in a race, riders need to be in total control of their bike at all times, while setting an example to less experienced cyclists.

Riders must observe the standard position as defined by article 1.3.008. This position requires that the only points of support are the feet on the pedals, the hands on the handlebars and the seat on the saddle.

Allowed Hands on the handlebars and seated on the saddle



Allowed Hands on the handlebars and seated on the saddle in a tucked position



Not Allowed Using the forearms as a point of support on the handlebar (except in time trials)



REGULATION CHANGES (APPLICABLE FROM 1ST APRIL) - UCI Regulations 2.2.025

To help ensure the safety of everyone in a race, riders need to be in total control of their bike at all times, while setting an example to less experienced cyclists.

Riders must observe the standard position as defined by article 1.3.008. This position requires that the only points of support are the following: the feet on the pedals, the hands on the handlebars and the seat on the saddle.

Not Allowed Seated on top tube



Not Allowed Leaning forward on handle bars



Not Allowed Leaning backwards and the saddle supporting the chest



Practical Examples



Using forearms as a point of support is not allowed



These positions are considered as allowed.



Using forearms and computer as a point of support is not allowed.



This position is considered as allowed.



Using forearms as a point of support is not allowed

Reminder – drafting behind a vehicle

RETURN OF A RIDER

Riders using the slipstream of the column of vehicles to regain the peloton is tolerated. In this situation, a rider overtakes the vehicles, temporarily taking shelter behind them.



A vehicle is not allowed to move up the column of following vehicles with the rider who has suffered an incident in its slipstream.

