



# Technical Guide

Rob Vernon Memorial  
Sunday August 24<sup>th</sup>, 2025

**Start Time 11:00am**

Bradie's Tavern Strathfieldsaye

Strathfieldsaye Rd

Location Copy Code-**59V5+63 Strathfieldsaye, Victoria**

## Event Schedule

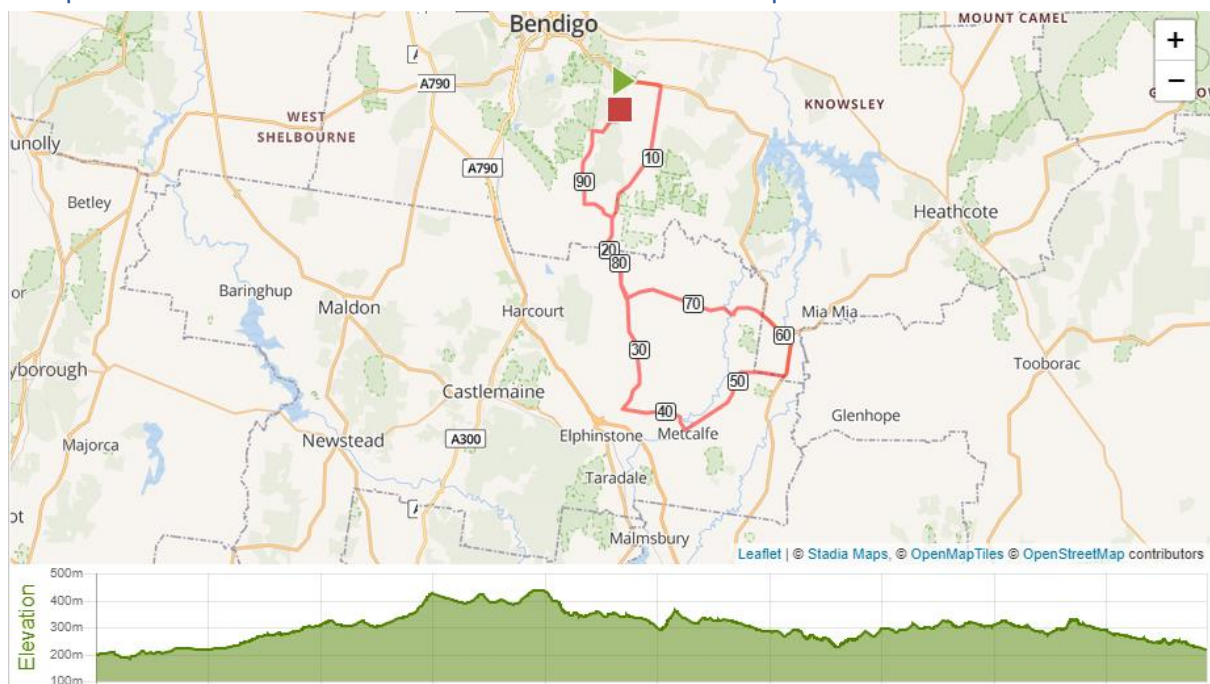
Sunday August 24th

**Registrations Open-** Bradie's Tavern, Strathfieldsaye.

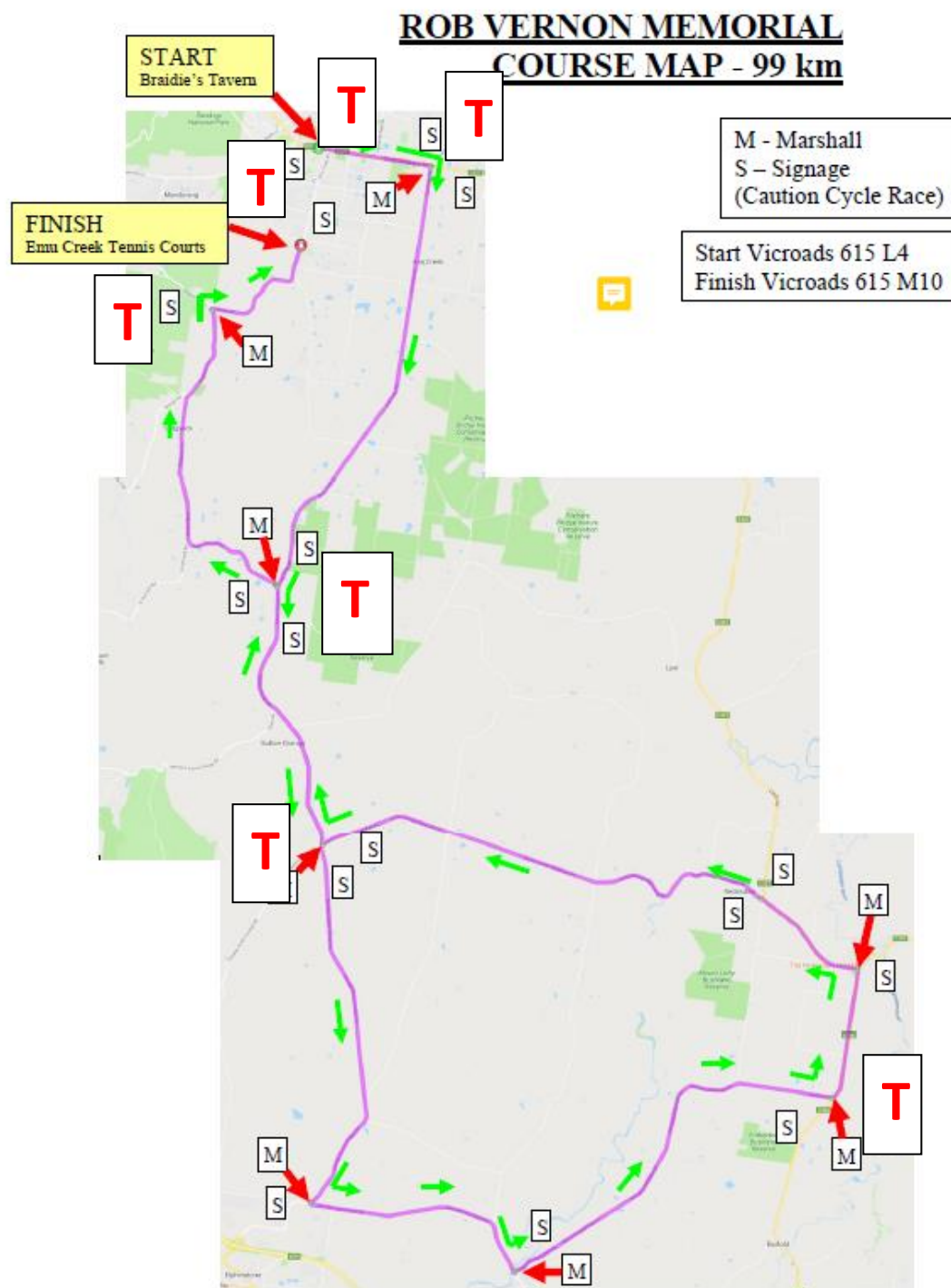
**Race Start-** 11:00am

**Approximate finish time-** 1:30pm-Emu Creek Tennis Courts. Approximately 3km form Start point.

## Map-Rob Vernon Memorial 2025 Course Map



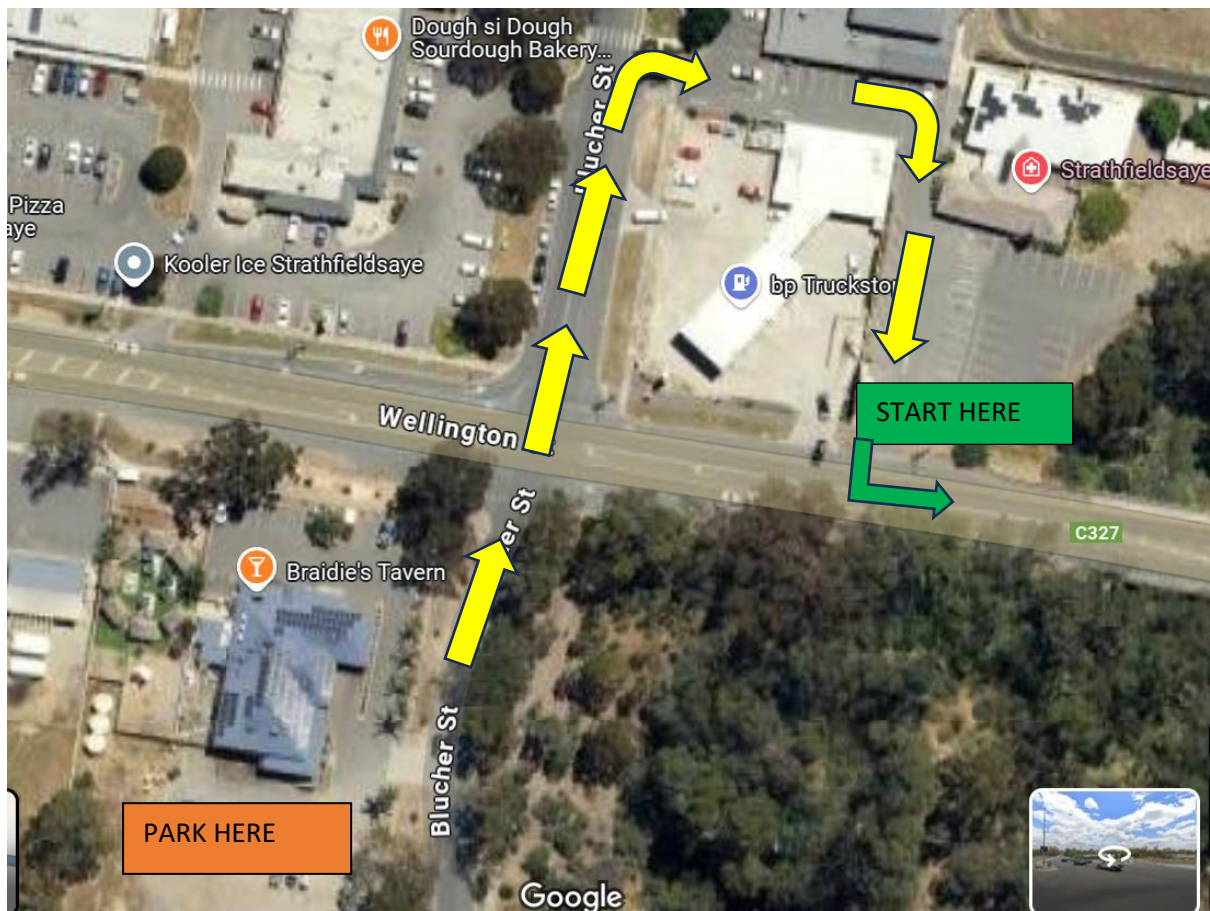
**Distance -93km**



<https://www.strava.com/routes/3116352193895424444>

**T** = Traffic Management

**RACE START**-Riders follow arrows to enter start position. **DO NOT** enter at race start exit point.





## Support Vehicle Parking-Race Start



# Bendigo Open-Rob Vernon Memorial

Sunday August 24th

Required Personnel (T)=Traffic Management

Position	Name	Contact	Ausycling Number
Race Director	Garry Pontelendolfo		
Media	Darren Casey		
Technical Manager	Rik McCaig	0417 341168	302217
<b>Commissaires x 7</b>			
Chief Commissaire (PCP)-	Stephen Michetti		
Commissaire 2-	David Danson		
Commissaire 3-	Christopher Wilkins		
Commissaire 4-	Annina Gallagher		
Commissaire 5-	Gregory Housden		
Commissaire 6-	Raymond Jarratt		
Commissaire 7-	Sharon Pontelendolfo		
Commissaire 8-	Francis Ryan		
<b>Lead Cars x7</b>			
Lead Car 1-	BDCC Member		
Lead Car 2-	BDCC Member		
Lead Car 3-	BDCC Member		
Lead Car 4-	BDCC Member		
Lead Car 5-	BDCC Member		
Lead Car 6-	BDCC Member		
Lead Car 7-	BDCC Member		
Sag Wagon-	BDCC Member		
<b>Corner Marshalls x 9</b>			
Corner Marshall 1-Start (T)	BDCC Member		Start can also do corner 8
Corner Marshall 2-Right to Axe Creek (T)	BDCC Member		2 can also do corner 9
Corner Marshall 3- Left to Sutton Grange (T)	BDCC Member		3 can also do corner 10
Corner Marshall 4- Left to Metcalf	BDCC Member		4 can do corner 10
Corner Marshall 5- Left at Metcalf	BDCC Member		
Corner Marshall 6- Left to Redesdale (T)	BDCC Member		
Corner Marshall 7- Left at Redesdale	BDCC Member		
Corner Marshall 8-Straight at Eppalock Roundabout	BDCC Member		
Corner Marshall 9- Right at Sutton Grange (T)	BDCC Member		
Corner Marshall 10- Right at Storys Rd (T)	BDCC Member		
Finish Marshalls	Additional Commissaires from following bunches		
Moto Scout 1	Tim Douglas		
Moto Scout 2	Accredited Moto Scout		
Moto Scout 3	Accredited Moto Scout		
Medical Vehicle			
Operations Crew	Lead by Tech Manager		
Operations Crew	BDCC Member		
Operations Crew	BDCC Member		
Operations Crew	BDCC Member		
Traffic Management	Bill Tibbett Traffic Australia Pty Ltd- <a href="mailto:bill@trafficaus.com">bill@trafficaus.com</a>	0447 256 104	
Catering			
Presentations			

## Bendigo Road Open-Rob Vernon Memorial

Sunday August 24<sup>th</sup>, 2025

Event Course Summary					
	Km*			Time	
Strathfieldsaye Rd	0.0km	Corner 1 Start	Braidie's Tavern	11:00am-11:30	Traffic Control
		Pass Emu Creek Rd			
		Pass Swanson Bvd			
		Pass McCleans Rd			
Axe Creek Rd		Pass Somerset Rd/Mannes Lane intersection			
	3.1km	Corner 2 RIGHT Turn into Axe Creek		11:00-11:30	Traffic Control
		Pass Houlahans Rd/Whitney Rd Intersection			
		Pass Patons Rd Intersection			
		Pass Abbotts Rd			
		Pass Salau Rd			
		Pass Trent Ct			
		Pass O'Connell Dve Haines Ln Intersection			
		Pass Myrtle Creek Rd			
		Pass Steens Rd			
		Pass Everode Dve			
		Pass McCarthy Lne			
Bendigo Sutton Grange Rd	16.7km	Corner 3 Veer LEFT into Sutton Grange Rd		11:20-11:50	Traffic Control
		Pass Huddle Rd			
		Pass Tarrleah Dr			
		Pass Brock Rd			
		Pass Carramar Dr			
		Pass Grays Rd			
		Pass Carnochans Rd			
	24.7km	Pass Harcourt Sutton Grange Rd			
		Pass Ontario Lodge Ln			
		Pass Kellow St			
		Pass Intersection Sutton Grange Redesdale Rd Faraday Sutton Grange Rd			
		Pass Smith Ln			
		Pass Jennings Hill Rd			
		Pass Blackfellows Gate Rd Dainty's Ln Intersection			
Metcalf Elpinstone Rd	35.7km	Corner 4 LEFT to Metcalfe		12:00-12:20	Marshall only

		Pass Owens Rd			
		Pass Green Ln			
	40.6km	CAUTION Steep Descent			
		Pass Coliban Park Rd			
<b>Metcalfe Redesdale Rd</b>	<b>42.7km</b>	<b>Corner 5 LEFT Turn into Metcalfe Redesdale Rd</b>		<b>12:10-12:30</b>	<b>Marshall Only</b>
		Pass Grady's Rd			
		Pass Rose Hill Rd			
		Pass Rowans Rd			
		Pass Summerhill Rd			
		Pass Racecourse Rd			
<b>Siddles Rd</b> (continuation of Metcalfe Redesdale Rd)					
		Pass Dallistons Rd			
		Pass Perrys Ln Intersection			
<b>Heathcote Kyneton Rd</b>	<b>54.6km</b>	<b>Corner 6 Caution LEFT into Kyneton Heathcote Rd</b>		<b>12:25-12:40</b>	<b>Traffic Control</b>
		Pass Took's Rd			
		Pass McNiffs Rd			
<b>Lyell Rd</b>	<b>58.4km</b>	<b>Corner 7 LEFT Turn into Lyell Rd at Redesdale</b>		<b>12:30-12:45</b>	<b>Marshall Only</b>
		Pass School Rd			
		Pass Mt Lofty Rd			
		Pass Newnhams Rd Intersection			
		Pass N Redesdale Rd			
<b>Sutton Grange Redesdale Rd</b>	<b>61.8km</b>	<b>Corner 8 KEEP STRAIGHT Roundabout</b>		<b>12:35-12:50</b>	<b>Marshall Only x 2</b>
		Pass Archbalds Rd			
		Pass Coliban Park Rd Myrtle Creek Rd Intersection			
		Pass Jennings Hill Rd Bartys Rd intersection			
		Pass Carnochans Back Rd			
<b>Bendigo Sutton Grange Rd</b>	<b>75.8km</b>	<b>Corner 9 CAUTION RIGHT Turn at Sutton Grange</b>		<b>12:50-1:10</b>	<b>Traffic Control</b>
		Pass Kellow St			
		Pass Ontario Lodge Ln			
		Pass Harcourt Sutton Grange Rd			
		Pass Carnochans Rd			
		Pass Grays Rd			
		Pass Carramar Dve			
		Pass Brock Rd			
		Pass Tarrleah Dr			



		Pass Huddle Rd			
	83.9km	Pass Axe Creek Rd	<b>Arrow Placement</b>	Keep Straight past Axe Creek Rd	<b>Moto Scout</b>
		Pass Nth Harcourt Rd			
<b>Sedgwick Rd</b> (continuation of Bendigo Sutton Brange Rd)					
		Pass Lemon Tree Ln			
		Pass Heritage Dr			
		Pass Roseneath Ln			
		Pass Claremont Pl			
		Pass Springs Rd			
		Pass Glen Clare Dr			
<b>Storys Rd</b>	<b>94.2km</b>	<b>Corner 11 Caution RIGHT TURN</b> into Story's Rd		1:25-1:40	<b>Traffic Control</b>
		Pass Cavagna Rd			
		<b>PASS Emu Creek Rd Corner</b>	<b>Moto Scout</b>		<b>Moto Scout</b>
		Pass Collins Ln			
<b>Emu Creek Rd</b> (Continuation of Story's Rd)	<b>98.2km</b>	<b>Finish Line</b>	<b>Emu Creek Tennis Club</b>	1:30-1:45	<b>Traffic Control At Hargreaves Rd</b>

## **Race Envelope**

- **Technical Manager 5-10 minutes ahead**
- **Official Lead Car**
- **Moto Scouts**
- **Race Director** (Either here or in front of Scratch)

## **Bunch 1-Limit**

- **Commissaire 1**
- 

- **Bunch 2 Lead Car**

## **Bunch 2**

- **Commissaire 2**
- 

- **Bunch 3 Lead Car**

## **Bunch 3**

- **Commissaire 3**
- 

### **Bunch 4 Lead Car**

## **Bunch 4**

- **Commissaire 4**
- 

- **Bunch 5 Lead Car**

## **Bunch 5**

- **Commissaire 5**
- 

- **Bunch 6 Lead Car**

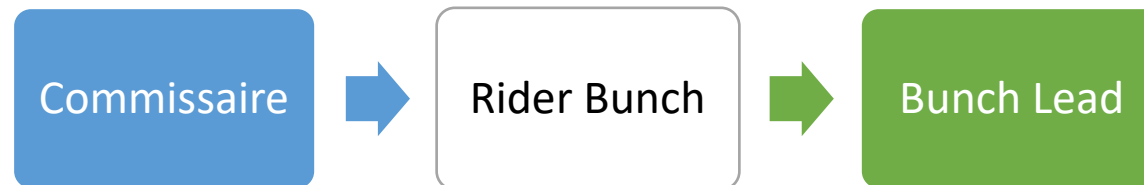
## **Bunch 6-Scratch**

- **Chief Commissaire**
- **Medical Vehicle**
- **Sag Wagon**
- **Race Envelope**

## Race Envelope



## Race Envelope Each Bunch



## Marshall Information

Could all Marshalls/volunteers arrive 10:30am at Braidie's Tavern (Start) at least 45 minutes prior to the start at 11:00am.

Please see Rik McCaig upon arrival in the car park at the rear of Braidie's Tavern.

All Marshalls can get their Marshall Information sheet.

Information sheet contains:

- Equipment needed
- Corner information
- Course Map and corner location
- Signs required and positioning of signs

**NB- Please do not leave your marshal point until the SAG WAGON has passed**

(Identified by sign in front windscreen left side)

## Contacts

- **Race Director**-Darren Casey    0409 196 554
- **President**- Garry Pontelendolfo 0419 311 890
- **Technical Manager**-Rik McCaig 0417 341 168
- **Chief Commissaire**- Stephen Michetti
- **First Aid**- Brett Kemp Ontrack Medical **0409 183 889**

## Radio Communication Channel-

At the completion of the race all equipment can be returned to the Bendigo & District Cycling Club Trailer or handed to Shane Freer.

If there are any issues/improvements that you can see with the event, please communicate with the BDCC.

**'What's App'** -Officials Link- TBC

***Your time and commitment is valued and appreciated.***

# Medical Information

OntrackMedical

**First Aid-** Brett Kemp Ontrack Medical **0409 183 889**

## **Medical and First Aid**

A high-quality medical service is a vital element of a cycle race, providing optimal treatment for any riders, officials, team members, organisation staff, media representatives.

The medical service should be in operation at least one hour before the start of the event and until one hour after the finish.

Each intervention by the medical services varies in terms of the number of patients, the seriousness of the injuries, the methods of evacuation and the proximity to hospitals or clinics.

All events must have a medical plan. When establishing this plan, the following should be considered:

- Type of event
- Courses
- Number of competitors
- Proximity to hospital
- Riders who will be participating (age, ability).

### **Minimum Standard**

All events must have a medical plan. Please see the AusCycling Medical Standards for further information.

Start -See Main Start Map

Braidie's Tavern Strathfieldsaye-TRAFFIC MANAGMENT



**Registration Braidie's Tavern Strathfieldsaye- 10:00am**

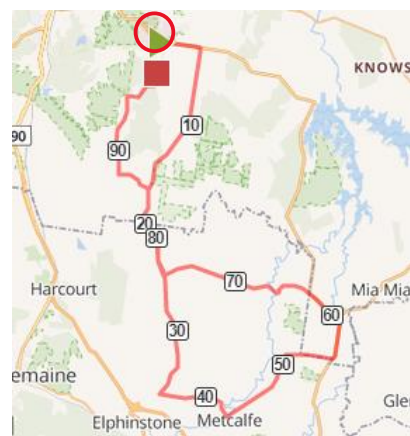
First Bunch off – 11:00am

Approximate finish time -1:30pm

**Toilets** YES

**Coffee at Hotel**

**Food** YES at Hotel



**Presentations Bradie's Tavern** approximately 30minutes after the finish. Food and beverages available. Please support our Sponsors.



**Corner 1– Left** Turn into Strathfieldsaye Rd

## Marshall- **TRAFFIC MANAGEMENT** Plus Club Marshall

Duties-Place directional arrow on corner so cyclists can see it. Also put out Cycle Race Ahead sign 200m back from corner on Bendigo Tennyson Rd.

### **Equipment Needed**

- Fluoro Vest
- Red & Green Flag
- Directional Arrow
- 'Cycle Race Ahead' sign

### **Corner Marshalling**

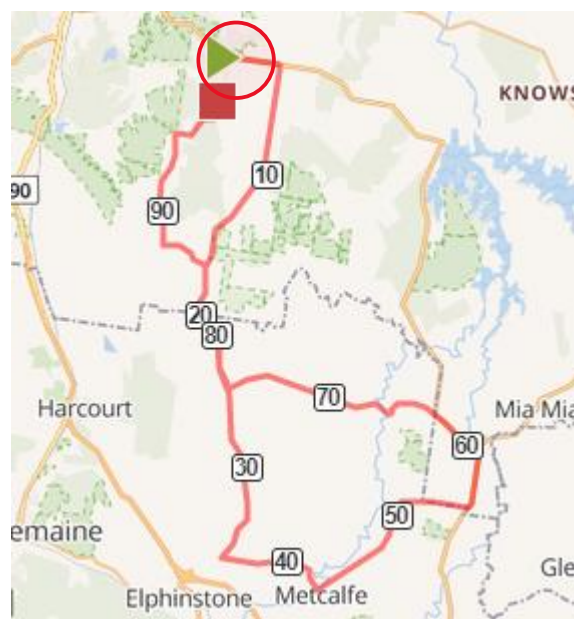
Each corner Marshall will have a Red & Green Flag

Green Flag indicates the road is clear and riders can proceed safely

Red Flag indicates riders to STOP. **STOP Riders-NOT Traffic**

Please clearly direct riders in the correct direction.

**Please do not leave your marshal point until the SAG WAGON has passed**



### **Contacts**

- **Race Director**-Darren Casey 0409 196 554
- **President**- Garry Pontelendolfo 0419 311 890
- **Technical Manager**-Rik McCaig 0417 341 168
- **First Aid**- Brett Kemp Ontrack Medical **0409 183 889**

**Corner 2- CAUTION RIGHT Turn** into Axe Creek Rd (Approx 3.2km)

## Marshall- **TRAFFIC MANAGEMENT** Plus Club Marshall

Place directional arrow on corner so cyclists can see it. Place Cycle Race Ahead sign 100m from corner Eppalock side on Strathfieldsaye Rd and 100m down Longlea Lane. Collect sign after final SAG Wagon has passed.

### **Equipment Needed**

- Fluoro Vest
- Red & Green Flag
- Directional Arrow
- 'Cycle Race Ahead' sign

### **Corner Marshalling**

Each corner Marshall will have a Red & Green Flag

Green Flag indicates the road is clear and riders can proceed safely

Red Flag indicates riders to STOP. **STOP Riders-NOT Traffic**

Please clearly direct riders in the correct direction.

**Please do not leave your marshal point until the SAG WAGON has passed**



### **Contacts**

- **Race Director**-Darren Casey 0409 196 554
- **President**- Garry Pontelendolfo 0419 311 890
- **Corner Marshall Roster**-Rik McCaig 0417 341 168
- **First Aid**- Brett Kemp Ontrack Medical **0409 183 889**

## Corner 3 -LEFT Turn into Sutton Grange Rd (Approx 17km)

### Marshall- **TRAFFIC MANAGEMENT** Plus Club Marshall

Place directional arrow on corner so cyclists can see it. Place Cycle Race Ahead sign 100m back from corner on Bendigo side Sutton Grange Rd and Sutton Grange side. Collect sign after final SAG Wagon has passed.

#### **Equipment Needed**

- Fluoro Vest
- Red & Green Flag
- Directional Arrow
- 'Cycle Race Ahead' sign

#### **Corner Marshalling**

Each corner Marshall will have a Red & Green Flag

Green Flag indicates the road is clear and riders can proceed safely

Red Flag indicates riders to STOP. **STOP Riders-NOT Traffic**

Please clearly direct riders in the correct direction.

**Please do not leave your marshal point until the SAG WAGON has passed**



## Contacts

- **Race Director**-Darren Casey 0409 196 554
- **President**- Garry Pontelendolfo 0419 311 890
- **Corner Marshall Roster**-Rik McCaig 0417 341 168
- **First Aid**- Brett Kemp Ontrack Medical **0409 183 889**

**Corner 4-LEFT Turn** into Metcalfe Elphinstone Rd (Approx 36km)

## Marshall-

Place directional arrow on corner so cyclists can see it. Place Cycle Race Ahead sign 100m past corner on Bendigo Sutton Grange Rd and on Metcalfe Elphinstone Rd. Collect sign after final SAG Wagon has passed. (B Grade)

### ***Equipment Needed***

- Fluoro Vest
- Red & Green Flag
- Directional Arrow
- 'Cycle Race Ahead' sign x 2

### **Corner Marshalling**

Each corner Marshall will have a Red & Green Flag

Green Flag indicates the road is clear and riders can proceed safely

Red Flag indicates riders to STOP. **STOP Riders-NOT Traffic**

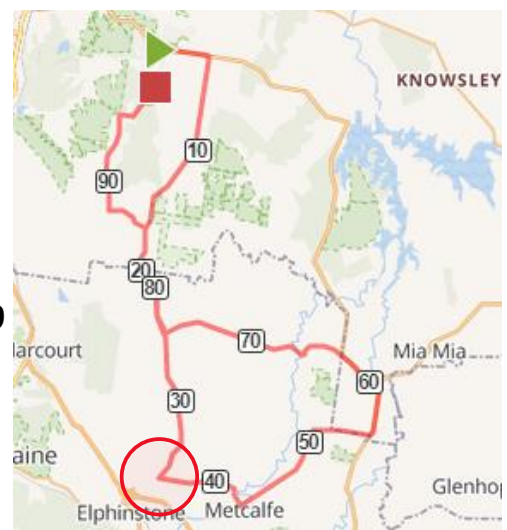
Please clearly direct riders in the correct direction.

**Please do not leave your marshal point until the SAG WAGON has passed**



## Contacts

- **Race Director**-Darren Casey 0409 196 554
- **President**- Garry Pontelendolfo 0419 311 890
- **Corner Marshall Roster**-Rik McCaig 0417 341 168
- **First Aid**- Brett Kemp Ontrack Medical **0409 183 889**





**Corner 5-Left Turn** into Metcalfe Redesdale Rd (Approx 43km)

## Marshall-

Place directional arrow on corner so cyclists can see it. Place sign Kyneton side of corner on Kyneton Metcalfe Rd.

Collect signs after final SAG Wagon has passed.

### ***Equipment Needed***

- Fluoro Vest
- Red & Green Flag
- Directional Arrow
- 'Cycle Race Ahead' sign x 1

### **Corner Marshalling**

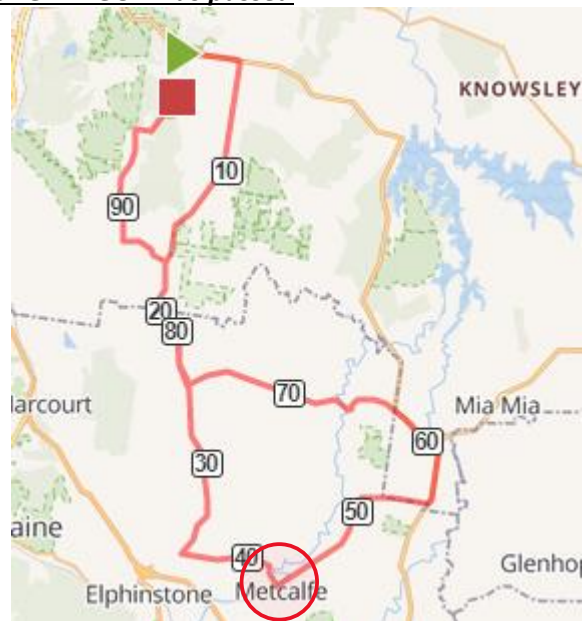
Each corner Marshall will have a Red & Green Flag

Green Flag indicates the road is clear and riders can proceed safely

Red Flag indicates riders to STOP. **STOP Riders-NOT Traffic**

Please clearly direct riders in the correct direction.

***Please do not leave your marshal point until the SAG WAGON has passed***



## Contacts

- **Race Director**-Darren Casey 0409 196 554
- **President**- Garry Pontelendolfo 0419 311 890
- **Corner Marshall Roster**-Rik McCaig 0417 341 168
- **First Aid**- Brett Kemp Ontrack Medical **0409 183 889**

**Corner 6- CAUTION LEFT Turn** into Kyneton Heathcote Rd (Approx 55km)

## Marshall- **TRAFFIC MANAGEMENT** Plus Club Marshall

Place directional arrow on corner so cyclists can see it. Place Cycle Race sign both sides of intersection on Kyneton Heathcote Rd.

Collect signs after final SAG Wagon has passed.

### ***Equipment Needed***

- Fluoro Vest
- Red & Green Flag
- Directional Arrow
- 'Cycle Race Ahead' signs x2

### **Corner Marshalling**

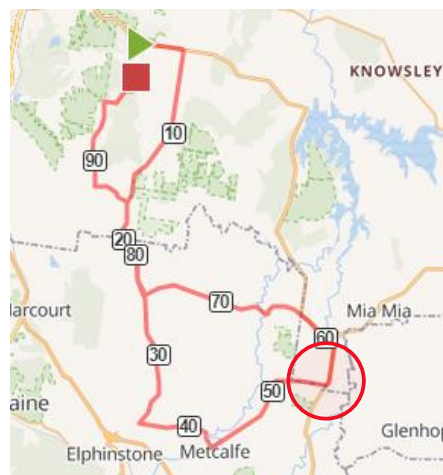
Each corner Marshall will have a Red & Green Flag

Green Flag indicates the road is clear and riders can proceed safely

Red Flag indicates riders to STOP. **STOP Riders-NOT Traffic**

Please clearly direct riders in the correct direction.

***Please do not leave your marshal point until the SAG WAGON has passed***



### **Contacts**

- **Race Director**-Darren Casey 0409 196 554
- **President**- Garry Pontelendolfo 0419 311 890
- **Corner Marshall Roster**-Rik McCaig 0417 341 168
- **First Aid**- Brett Kemp Ontrack Medical **0409 183 889**



## Corner 7- LEFT Turn into Lyell Rd (Approx 59km)

### Marshall-

Place directional arrow on corner so cyclists can see it. Place Cycle Race sign both sides of intersection on Kyneton Heathcote Rd.

Collect signs after final SAG Wagon has passed.

#### ***Equipment Needed***

- Fluoro Vest
- Red & Green Flag
- Directional Arrow
- 'Cycle Race Ahead' signs x2

#### **Corner Marshalling**

Each corner Marshall will have a Red & Green Flag

Green Flag indicates the road is clear and riders can proceed safely

Red Flag indicates riders to STOP. **STOP Riders-NOT Traffic**

Please clearly direct riders in the correct direction.

**Please do not leave your marshal point until the SAG WAGON has passed**



### Contacts

- **Race Director**-Darren Casey 0409 196 554
- **President**- Garry Pontelendolfo 0419 311 890
- **Corner Marshall Roster**-Rik McCaig 0417 341 168
- **First Aid**- Brett Kemp Ontrack Medical **0409 183 889**

**Corner 8- Keep Straight at roundabout** continue on Sutton Grange Redesdale Rd  
(Approx 63km)

## **Marshalls x2 – Marshall 1- Marshall 2-**

Place directional arrow on corner so cyclists can see it. Place Cycle Race sign both sides of intersection on Sutton Grange Redesdale Rd and Eppalock Rd.

Collect signs after final SAG Wagon has passed.

### ***Equipment Needed***

- Fluoro Vest
- Red & Green Flag
- Directional Arrow
- 'Cycle Race Ahead' signs x2

### **Corner Marshalling**

Each corner Marshall will have a Red & Green Flag

Green Flag indicates the road is clear and riders can proceed safely

Red Flag indicates riders to STOP. **STOP Riders-NOT Traffic**

Please clearly direct riders in the correct direction.

**Please do not leave your marshal point until the SAG WAGON has passed**



## **Contacts**

- **Race Director**-Darren Casey 0409 196 554
- **President**- Garry Pontelendolfo 0419 311 890
- **Corner Marshall Roster**-Rik McCaig 0417 341 168
- **First Aid**- Brett Kemp Ontrack Medical **0409 183 889**

**Corner 9- CAUTION RIGHT Turn** into Bendigo Sutton Grange Rd (Approx 76km)

## **Marshall- Traffic Management Plus Club Marshall**

Place directional arrow on corner so cyclists can see it. Place Cycle Race sign both sides of intersection on Bendigo Sutton Grange Rd and Faraday Sutton Grange Rd

Collect signs after final SAG Wagon has passed.

### ***Equipment Needed***

- Fluoro Vest
- Red & Green Flag
- Directional Arrow
- 'Cycle Race Ahead' signs x2

### **Corner Marshalling**

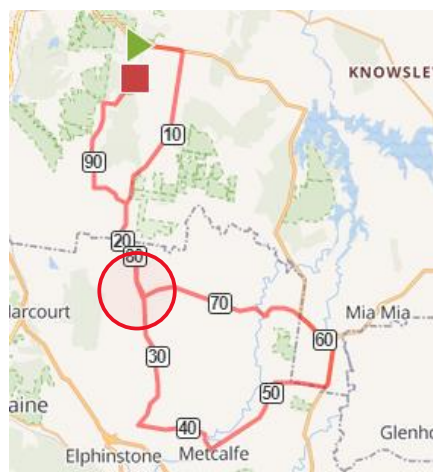
Each corner Marshall will have a Red & Green Flag

Green Flag indicates the road is clear and riders can proceed safely

Red Flag indicates riders to STOP. **STOP Riders-NOT Traffic**

Please clearly direct riders in the correct direction.

***Please do not leave your marshal point until the SAG WAGON has passed***



## **Contacts**

- **Race Director**-Darren Casey 0409 196 554
- **President**- Garry Pontelendolfo 0419 311 890
- **Corner Marshall Roster**-Rik McCaig 0417 341 168
- **First Aid**- Brett Kemp Ontrack Medical **0409 183 889**

## Corner 10- Keep Straight Pass Axe Creek Rd (Approx 85km)

### Marshall- Moto Scout

Stand and prevent any competitor turning RIGHT into Axe Creek Rd

#### ***Equipment Needed***

- Fluoro Vest
- Red & Green Flag
- Directional Arrow
- 'Cycle Race Ahead' signs

#### **Corner Marshalling**

Each corner Marshall will have a Red & Green Flag

Green Flag indicates the road is clear and riders can proceed safely

Red Flag indicates riders to STOP. **STOP Riders-NOT Traffic**

Please clearly direct riders in the correct direction.

**Please do not leave your marshal point until the SAG WAGON has passed**



### Contacts

- **Race Director**-Darren Casey 0409 196 554
- **President**- Garry Pontelendolfo 0419 311 890
- **Corner Marshall Roster**-Rik McCaig 0417 341 168
- **First Aid**- Brett Kemp Ontrack Medical **0409 183 889**



**Corner 11- CAUTION RIGHT Turn** into Story's Rd *Traffic Management support*  
(Approx 95km)

## Marshall- **Traffic Management** plus 1 Club Marshall

Place directional arrow on corner so cyclists can see it. Place Cycle Race sign both sides of intersection on Sedgwick Rd and Story's Rd  
Collect signs after final SAG Wagon has passed.

### ***Equipment Needed***

- Fluoro Vest
- Red & Green Flag
- Directional Arrow
- 'Cycle Race Ahead' signs x2

### **Corner Marshalling**

Each corner Marshall will have a Red & Green Flag  
Green Flag indicates the road is clear and riders can proceed safely  
Red Flag indicates riders to STOP. **STOP Riders-NOT Traffic**  
Please clearly direct riders in the correct direction.

**Please do not leave your marshal point until the SAG WAGON has passed**



### **Contacts**

- **Race Director**-Darren Casey 0409 196 554
- **President**- Garry Pontelendolfo 0419 311 890
- **Corner Marshall Roster**-Rik McCaig 0417 341 168
- **First Aid**- Brett Kemp Ontrack Medical **0409 183 889**

**Corner 12- CAUTION Pass Intersection** at Story's Rd Emu Creek Rd intersection continue straight to finish along Emu Creek Rd  
(Approx 1 km from finish line)

## Marshall- Moto

Stop entering traffic from Collins Lane as competitors race to the finish. If vehicle is allowed to turn ask to them to proceed carefully past finish area.

### ***Equipment Needed***

- Fluoro Vest
- Red & Green Flag
- 'Cycle Race Ahead' signs x1

### **Corner Marshalling**

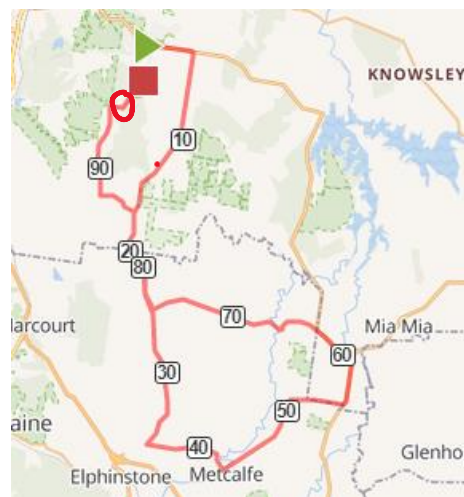
Each corner Marshall will have a Red & Green Flag

Green Flag indicates the road is clear and riders can proceed safely

Red Flag indicates riders to STOP. **STOP Riders-NOT Traffic**

Please clearly direct riders in the correct direction.

**Please do not leave your marshal point until the SAG WAGON has passed**



## Contacts

- **Race Director**-Darren Casey 0409 196 554
- **President**- Garry Pontelendolfo 0419 311 890
- **Corner Marshall Roster**-Rik McCaig 0417 341 168
- **First Aid**- Brett Kemp Ontrack Medical **0409 183 889**



## Escort Vehicles

### Escort Vehicles (Lead and Sag Wagon Vehicles)

All escort vehicles must have an amber flashing light affixed to the roof, clearly visible from all directions and operating whilst escorting cyclists in a race.

It is generally best practice for all vehicles to have a "CYCLE RACE AHEAD" sign visible, or similar depending on local authority requirements. Lead vehicles should position this sign on the front, and tail vehicles positioning it on the rear.

Signs fitted to escort vehicles are to be clearly visible to other motorists.

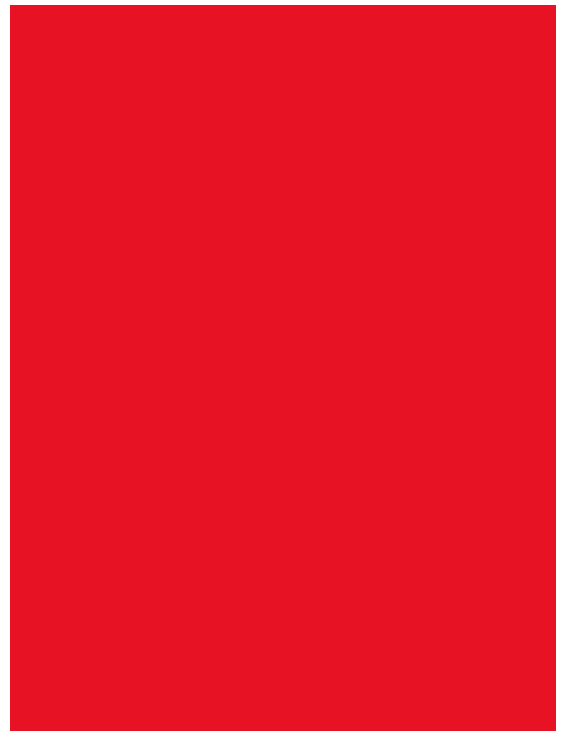
Escort vehicles must be equipped with reliable two way radio communication between drivers at all times during the race. The communication should be capable of being sustained over a distance of at least five km under conditions normally encountered during the race.

Escort vehicles must be in a safe operational condition and properly registered. For multiple lap races and point to- point races an escort vehicle must follow the rear most competitor, or the rear of the main group, and display to the rear a sign clearly visible to drivers of any overtaking vehicles with the words "RACING CYCLISTS AHEAD".

An intermediate escort vehicle should be considered if the competitors are likely to be spread out over more than 2 kilometres.

In some instances a race organiser or Commissaire may direct the dropped rider to withdraw from the race by removing the race number affixed to the riders' person.  
**THIS POINT SHOULD BE CLEARLY EXPLAINED AT RACE BRIEFING PRIOR TO THE START.**

**Note:** escort vehicles are not required for Time Trials or Criteriums



<https://www.strava.com/routes/3116352193895424444>

Escort vehicles will lead their designated bunch. When a bunch is about to catch another bunch the Escort Vehicle for the bunch that is gaining/about to catch the group in front will pull to the left of the road to enable clear passage.

The Escort vehicle in the front will continue. The exiting vehicle can assist with corner marshalling or Finish Line duties.

### Contacts

- **Race Director**-Darren Casey 0409 196 554
- **President**- Garry Pontelendolfo 0419 311 890
- **Corner Marshall Roster**-Rik McCaig 0417 341 168
- **First Aid**- Brett Kemp Ontrack Medical **0409 183 889**

## Finish-Emu Creek Reserve

Marshall- **TRAFFIC MANAGEMENT** Plus Commissaires returned from bunch following

Barricades both sides of the road.

NO PARKING before finish line. Parking ONLY Strathfieldsaye side of finish line.



### Parking

All rider support vehicles and spectators need to familiarise themselves with the start/finish point parking. Please be sure not to impede traffic in any way when considering parking options.

Vehicle should be well off the road edge.

Preparing cyclists/spectators should ensure that they are not gathering on the road edge or impeding onto the road surface.

### Start/Finish Safety

Preparing cyclists/spectators should ensure that they are not gathering on the road edge or impeding onto the road surface.

Do not impede officials/judges when spectating.

Stand well back from the road edge.

Where barricades are present, stand behind barricades.

Do not cross the road when vehicle, riders or bunches are in sight.

Please comply with Race Officials requests.

**NO PETS** Allowed. Even if your dog is on a leash, it is not permitted.

Thank you for your understanding and support.