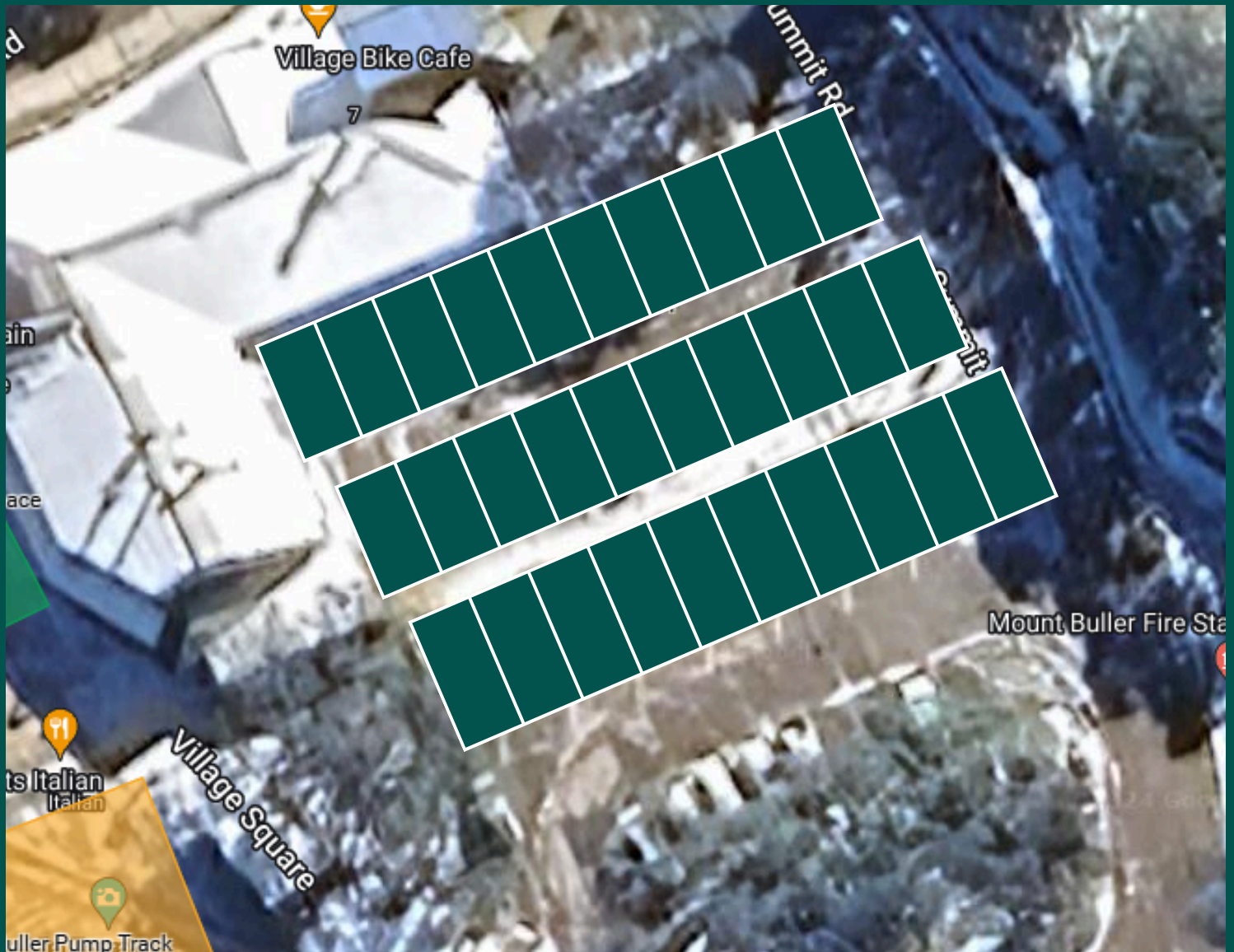


# 2025 GWM Mountain Bike National Championships



## Pit Spaces

Site Plan and Layout - XC Commons



**Pit Crew Sites**  
**3m x 3m**

Maximum of 2 sites per crew

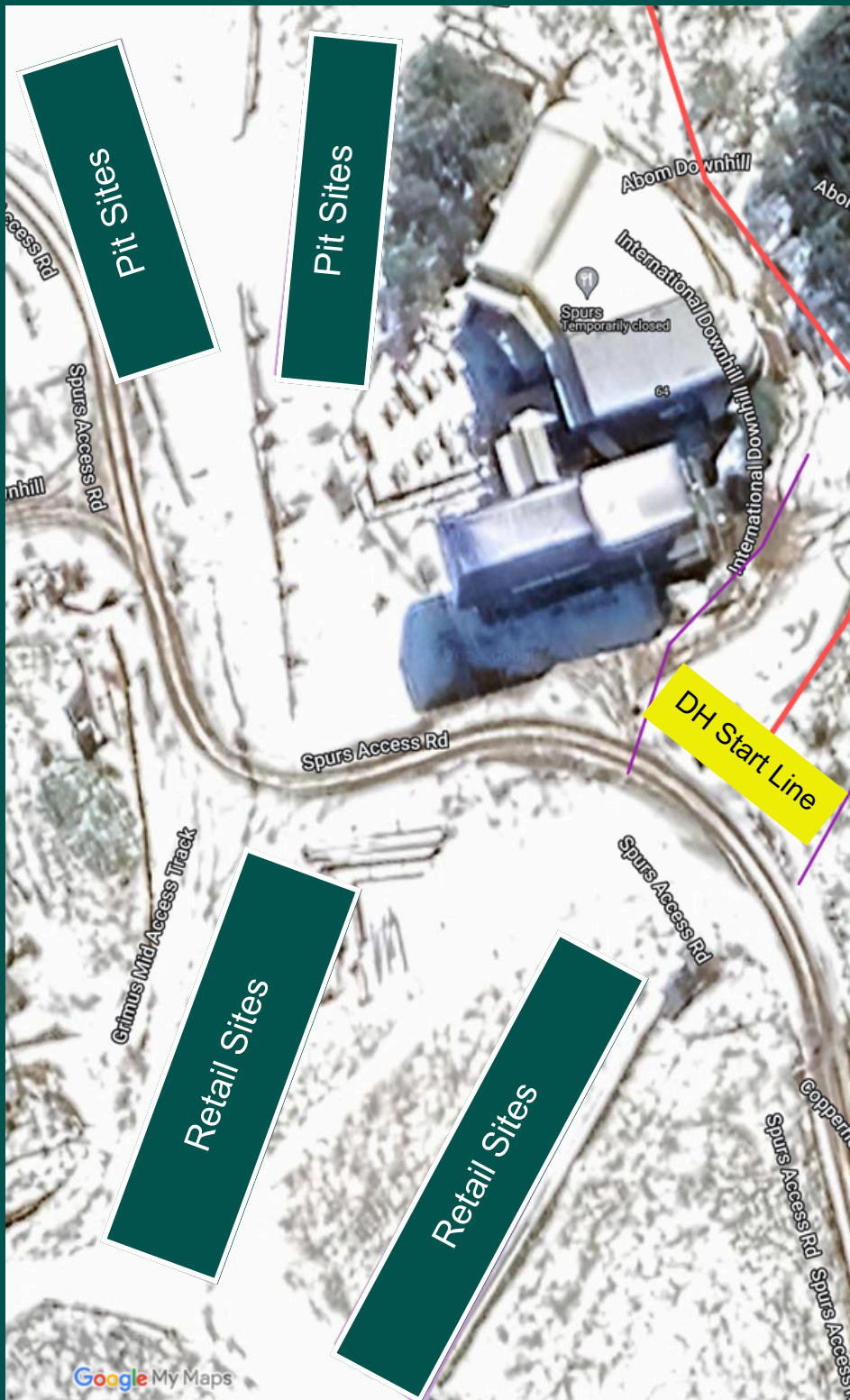
**16 Sites**  
**Available**

# 2025 GWM Mountain Bike National Championships



## Pit Spaces

Site Plan and Layout - Downhill Drop



## Pit Crews

3m x 3m

Maximum of 2 sites per crew

---

## 20 Sites Available

# 2025 GWM Mountain Bike National Championships



## Expo and Pit Spaces

### Pricing

Site Type	Cost
Pit Space (Downhill Drop or XC Commons) (3m x 3m) x 1	\$200*
Pit Space (Downhill Drop or XC Commons) (3m x 3m) x 2	\$350*

*\*All costs are subject to GST*

### Bump In

Bump in for vendors and pit crews will be available from Tuesday the 11th of March from 9:00am until site closure at 4:00pm the same day.

If you require additional time, you can request to bump in from 12:00pm on Monday the 10th of March, however you will be required to coordinate with the AusCycling contractors also bumping in equipment and venues. AusCycling contractors will have first preference for parking for unloading and erecting structures.

### Bump Out

Bump out for vendors and pit crews will commence from Sunday the 16th of March from 4:00pm until site closure at 12:00pm the following day (Monday 17th of March).

Site holders will not be able to request additional time to bump out, outside of these hours.

# 2025 GWM Mountain Bike National Championships



## Expo and Pit Spaces

### Additional Information

#### **Parking**

Parking will be available for vendors at X. Vendor vehicles will be limited to one vehicle parking space per site. Vendors must display the event Parking Pass provided by AusCycling at all times. Failure to do so may result in vehicles being towed at owners expense.

#### **Sites & Structures**

All Sites are 3m x 3m. Vendors must ensure that their marquee and any freestanding external are appropriately anchored and are not at risk of falling over. AusCycling reserves the right to request that a vendor take down or reinforce a structure if deemed unsafe.

#### **Power**

All Expo and retail sites will come unpowered. If you require power as part of your activation you will be responsible for supplying a generator or battery to facilitate this. Please note that all equipment being used must be tagged and tested with a current and valid date. AusCycling reserves the right to prevent vendors from using equipment that does not meet this requirement.

#### **Water**

All expo and retail sites will not have direct access to water however you will be able to fill up containers for further use at various points around the event village.

#### **Internet**

No internet connection will be provided for vendors. Vendors who require an internet connection must facilitate this themselves. The cellular reception at the event village is strong and mobile communications are a suitable solution for this event.