



2025 UCI MASTERS WORLD CHAMPIONSHIPS DHI & XCO TECHNICAL GUIDE



Queensland
Government

TOURISM
& EVENTS
Queensland



Cairns
REGIONAL COUNCIL

CAIRNS &
GREAT BARRIER REEF
TROPICAL NORTH QUEENSLAND



JAMES COOK
UNIVERSITY
AUSTRALIA



AUSCYCLING

CRANKWORX CAIRNS,
21-25 May 2025

QUEENSLAND IS HOME TO WORLD-CLASS EVENTS



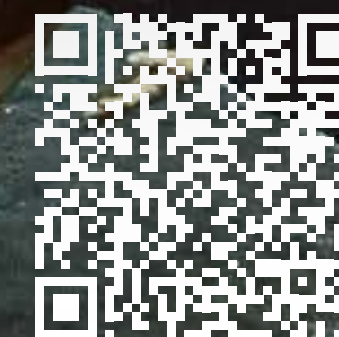
CRANKWORX CAIRNS CRANKWORX CAIRNS CRANKWORX CAIRNS CRANKWORX CAIRNS CRANKWORX CAIRNS CRANKWORX CAIRNS

[QUEENSLAND.COM/EVENTS](https://queensland.com/events)

Queensland
AUSTRALIA



GEAR UP FOR A TRIP TO REMEMBER



CAIRNS &
GREAT
BARRIER
REEF

TROPICALNORTHQUEENSLAND.ORG.AU



ADVENTURE AWAITS IN THE TROPICS

EXPLORE GREAT LEAVE GREATER

CAIRNS CANYONING

There's waterfall chasing and then there's canyoning. See a different side to some of Cairns' most iconic waterways as you abseil, zipline, slide and leap down incredible freshwater creeks surrounded by dense tropical rainforest.

BAD FISHY JET BOATING

Experience spins, slides and speed – and plenty of laughs – on Bad Fishy's Tropical Twist jet boat tour, a fast-paced 35-minute marine adventure that takes in the sights of beautiful Trinity Inlet in Cairns.



CAIRNS SKYDIVING

Ramp up the adrenaline to the max and experience an unforgettably breathtaking view of Tropical North Queensland's twin jewels – its World Heritage rainforest and the Great Barrier Reef – with a tandem skydive at Cairns or Mission Beach. Or skydive over the stunning Etty Bay with Cairns Skydiving.



CAIRNS ADVENTURE GROUP RAFTING

Take your pick of locations and navigate the rapids of the beautiful Barron or Tully rivers in your own raft on a guided tour. The guides will show you the ropes and lead you every step of the way as the river twists through spectacular World Heritage rainforest scenery and the rapids get bigger and trickier.



SKYPARK CAIRNS

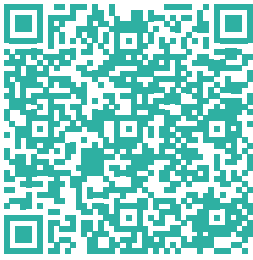
At Skypark Cairns by AJ Hackett's Bungy Tower, set in the rainforest at Smithfield, you can take your pick from the 16 different jump styles on offer, which include everything from a graceful Swan Dive all the way to riding a BMX bike off a roof. Or you can just soar to a height of 45m at speeds of up to 120km/h with a friend on the Giant Jungle Swing.

RIDE THE REEF & RAINFOREST

With hundreds of kilometres of trails across the region, including more than 700 kilometres of easily accessible trails in the Cairns region alone, there really is something for every kind of rider.



SMITHFIELD MOUNTAIN BIKE PARK
Just 15 minutes from Cairns CBD, you'll find 60km of trails, from easy to challenging. You'll explore lush jungles, clear streams, and soak in Great Barrier Reef views from rugged ridges.
DISTANCE: 70M- 3KM
TIME: 5MIN- 1HR



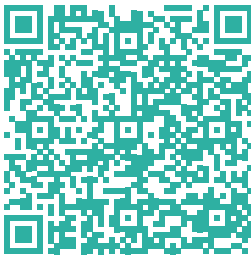
ATHERTON MOUNTAIN BIKE PARK
Choose from 17 trails that wind through open forests, offering a rural experience for mountain biking enthusiasts. Beginners can enjoy the green trails at lower elevations, while more challenging rides await as you climb higher.
DISTANCE: 10-35KM | **TIME:** 1.5-4HRS



DAVIES CREEK BIKE PARK
Here you'll find single track trails, with slightly less elevation. The park has multiple trails, with Trail 1 (Gateway Loop) as the main route. You can ride parts of it or the entire loop. Be sure to enjoy a refreshing post-ride dip at nearby Davies Creek Falls.
DISTANCE: 1KM-12.3KM | **TIME:** 2HRS



MUSGRAVEA TRACK
This easy 6km one-way ride takes you into the dense rainforest of the Djiru National Park, just inland of Mission Beach, and has lovely swimming spots at either end.
DISTANCE: 12KM RTN | **TIME:** 2HRS



BUMP TRACK
Choose between a guided tour with Biked for local insights or ride solo from Port Douglas. This trail, once an Indigenous path connecting coastal and mountain regions. The trail winds through ancient forests, waterfalls, and finishes at the beautiful Four Mile Beach. This historic route also serves as the exciting conclusion of the Reef to Reef race.
DISTANCE: 6KM | **TIME:** 2HRS



MISTY MOUNTAINS
Conquer Koolmoon Creek, Gorrell, and Cardwell Range tracks. These serve up rides of varying distance and difficulty, from intermediate to hard, for experienced, well-equipped riders looking for a challenge in often very isolated territory.
DISTANCE: 15KM- 40KM | **TIME:** 1.25 HRS- 2.5KM



WELCOME

The UCI Mountain Bike World Masters Championships takes the world's best downhill and cross-country masters riders to Cairns, Australia. The world-famous facility, Smithfield Mountain Bike Park, has hosted the UCI Mountain Bike World Championships and World Cups no less than five times before.

Riders will converge on the tropical paradise of Cairns in the chase of rainbows at the 2025 UCI Masters Mountain Bike World Championships. Get ready to see their runs through the rainforest. The courses twist through spectacular vine-clad jungle, over clear flowing streams and along jagged ridges overlooking the Great Barrier Reef. It will not be for the faint-hearted but for the fearless.

The UCI Masters Mountain Bike World Championships gives you the chance to explore one of the Natural Wonders of the world, The Great Barrier Reef and also experience the beautiful Daintree Rainforest.

This technical guide covers the procedures and information necessary to participate in the Master XCO and DHI UCI World Championship to be held from May 14 to 18, 2025.

INSTITUTIONAL PARTNERS



Queensland
Government

TOURISM
& EVENTS
Queensland



CAIRNS &
GREAT BARRIER REEF
TROPICAL NORTH QUEENSLAND





Message from the Tourism Tropical North Queensland

Mark Olsen

Welcome to Tropical North Queensland where you can ride through the world's oldest rainforest one day and dive on the Great Barrier Reef the next. The UCI Mountain Bike Masters World Championships are set against an incredible World Heritage backdrop where more than 2000 experiences will encourage you to stay longer.

Your mountain biking adventure can include high-adrenalin experiences like skydiving on the beach and softer adventures such as river drift snorkelling through the rainforest. Relax on the waterfront at a brewery, sip cocktails at a rooftop bar and enjoy fresh seafood on a converted trawler in the marina.

Tropical North Queensland is home to world-class cycling events including Crankworx Cairns, Ironman Asia-Pacific, and Port Douglas Gran Fondo, which entice participants back each year to See Great and Leave Greater.





Message from Mayor, Cairns Regional Council

Amy Eden

On behalf of Cairns Regional Council and the entire Cairns community, it is my pleasure to extend a warm tropical welcome to all competitors, officials, and supporters gathered for the 2025 UCI Masters MTB World Championships.

We are thrilled to host this prestigious event, which not only enhances our reputation as a world-class destination for major sporting events but also provides an incredible opportunity to showcase the breathtaking natural beauty of our region and our renowned warm hospitality. This championship is a chance for our community to witness the skill, determination, and passion of mountain biking's finest right here in our backyard.

The adrenaline-fueled excitement of hurtling down steep trails, weaving through ancient rainforest paths, and tackling the bumps, jumps, and challenges of mountain biking is an adventure like no other. It's a sport that captures the essence of thrill, precision, and connection with nature.

Cairns has a proud history of hosting world-class mountain biking events. From World Cup competitions to its recent inclusion as part of Crankworx, the most-watched mountain bike series globally, Cairns has cemented its status as



a premier destination for elite mountain biking. At the heart of this legacy is the Smithfield Mountain Bike Park, home to some of the most challenging and picturesque trails in the world.

To all the athletes, may you ride hard, fast, and safely as you push your limits on these extraordinary trails. To the supporters and officials, thank you for being part of this celebration of mountain biking. Together, let's make this an unforgettable championship in the tropics.

Warm regards,

Cr Amy Eden

Mayor

Cairns Regional Council



EVENT DETAILS



SANCTIONS AND REGULATIONS

The competition is governed by UCI regulations and by special regulations contained in this technical guide.

In the event of a conflict between the information presented in this technical guide and any other source of information (other than an official statement by the organization or the panel of Commissaires during the event), the information found in this technical guide will be taken as correct and definitive.

By participating, athletes expressly acknowledge this guide and the regulations by which the event is governed framed within the UCI Regulations and their respective sanctions and regulations.

REGISTRATION

Registrations will be exclusively Online through the event page at: <https://www.mtbmastersworldscairns.com.au/entries> and close on May 9.

Athlete registration will be located to the left of the main festival entry gates. The operational times of this office is daily as outlined in the schedule.





CATEGORIES

Categories will be awarded based on 5 year age categories starting at 35-39 for both men and women.

SCHEDULE

All schedule information can be found at:
<https://www.mtbmastersworldscairns.com.au/schedule>



CONTACT LIST

ROLE	CONTACT NAME	PHONE NO.
RACE MANAGEMENT		
President of the Commissaires' Panel (PCP)	Peter Blakey	
COMMISSAIRES & TECHNICAL DELEGATE		
Commissaire	Shane Currie	
Commissaire	Darryl Cram	
Commissaire	Peter Hosking	
Commissaire	Ian Masters	
Commissaire	Lorraine Schutz	
Commissaire	Tim Rowe	
Commissaire	Martin McKowen	
Commissaire	Allie Smith	
TIMING & RESULTS		
Timing & Results Coordinator	Neil Hamey	
Dial (000) for any emergencies.		





MEDICAL

A medical provider will be appointed as the medical provider who in conjunction with AusCycling will coordinate and manage all medical incidences, personnel and logistics.

First aid personnel will also be available in the First Aid tent located in the Event venue.

The medical team will have radio contact with on-course marshals and the race manager for the duration of training and race sessions. In the case of a serious emergency, please call '000'.

HOSPITAL

Cairns Hospital is located 15.6km from the Smithfield Mountain Bike Park Trail Head which is approximately a 20min drive.

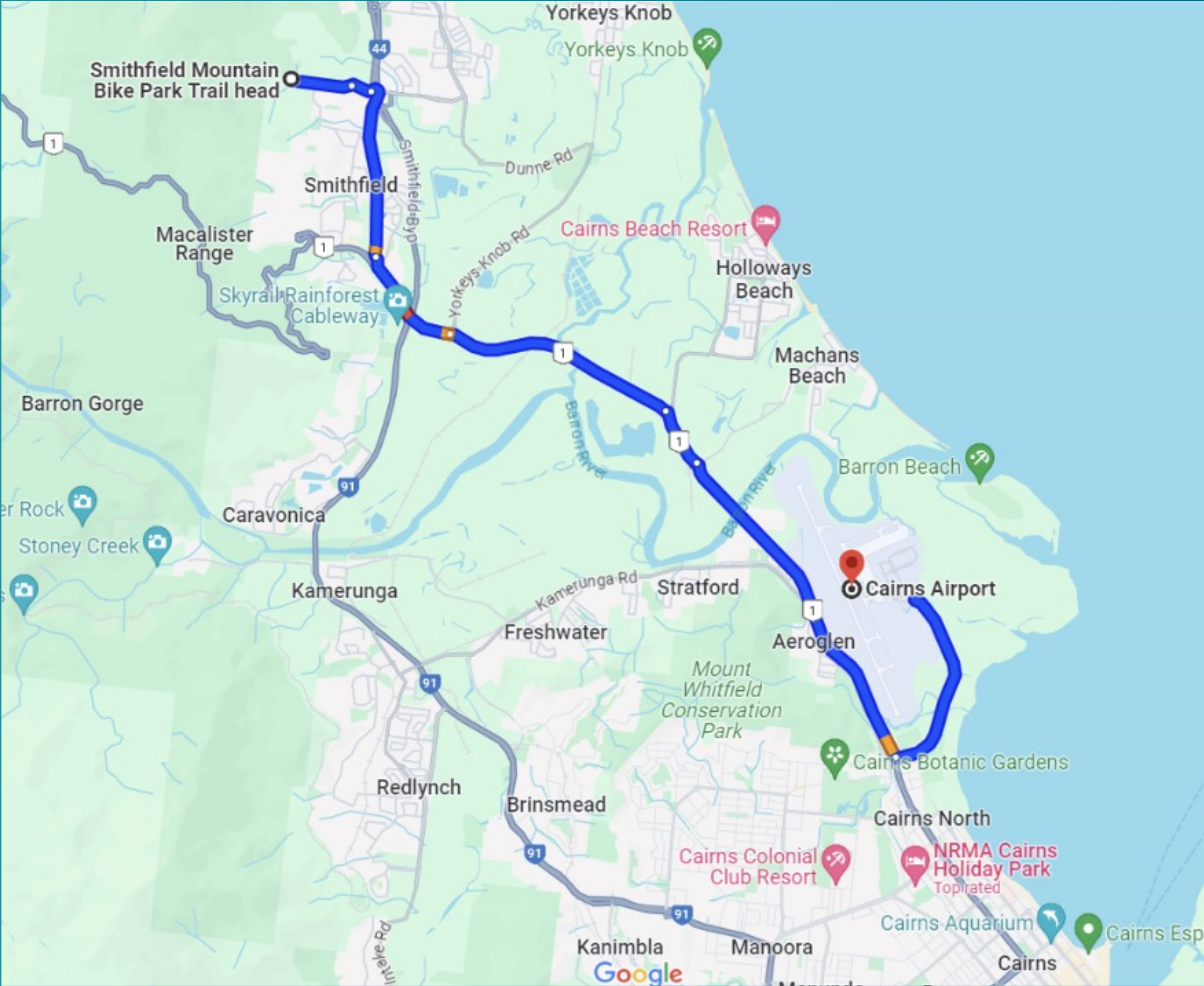
[Directions](#)

RESULTS

Results will be posted at results.auscycling.org.au. The protest period is 15 minutes after posting, after which time they become final. All protests should be conducted through the President of the Commissaire Panel.

GEOGRAPHICAL LOCATION

Smithfield Mountain Bike Park Trail Head is located 15.8km from the Cairns Airport, which is a 18min drive to the event location.



TECHNICAL REGULATIONS



REGULATIONS

- The event will be conducted in line with the UCI Technical Regulations
- Please note all participants must have a current License from their National Federation and a UCI ID.
- All participants may not have obtained UCI points during the 2025 season.
- For the competition, the UCI regulations will be applied from the moment the athlete arrives at the competition area. For this reason, good behavior is recommended during the times of the official schedule in all common spaces, on the course, and in hotels, bars and restaurants, etc.
- The participant must have personal accident insurance that covers sports of this type and which covers the participant for the complete duration of the event.
- It is necessary to be registered and have the plate affixed to the bicycle at all to access the circuit.



START ORDER XCO

1. The defending UCI Master World Champion from the current age group
2. The defending UCI Master World Champion who has moved up to the next age group
3. All other riders in entry order

START ORDER DHI

For the seeding round:

1. The defending UCI Master World Champion from the current age group
2. The defending UCI Master World Champion who has moved up to the next age group
3. All other riders in entry order

For the finals:

In reverse qualification order with the fastest rider from seeding run starting last. Riders are required to ride in the seeding round to qualify for finals.





FEED/TECH ZONE

A designated Double Feed Zone will be located on the XCO course. Feeding and Technical support may only be provided in this zone. All individuals who are feeding or providing technical support must register with the individual or team that they are supporting. Feeding is only permitted at this Feed Zone by a support person who shall hand up bidons or food.

No rider may turn back on the course to reach a feed/technical assistance zone. Any rider doing so is disqualified. Only within the feed/technical assistance zone itself, a rider may turn back without obstructing other competitors.

ANTI-DOPING CONTROL

This will be carried out in accordance with UCI regulations. Anti-Doping Testing may be conducted at this event. It is the responsibility of the rider to ensure they are not required for testing prior to their departure post-race.

SEVERE WEATHER GUIDELINES

When looking at weather conditions, the safety of the athletes, spectators, staff, and volunteers is the utmost priority. While often providing an additional challenge, adverse weather in its extremes may result in hypothermia, heat exhaustion or other dangerous conditions.



In all cases the event will follow the UCI Extreme Weather Regulations.

In the event of extreme weather including lightning, strong winds or a severe storm, event operations may be affected and schedule changes may happen. In the event a chairlift closure effects a seeding or finals run, the final results may be determined by either the seeding run or finals run only.

CLOTHING

It is not mandatory to compete in the uniform of each country, although it is recommended that it be done.

PROTECTIONS

For downhill participants must follow UCI regulations 4.3.011, 4.3.012 and 4.3.013

For XCO, a UCI compliant helmet is required.



RACE NUMBERS

Riders will be issued with a frame plate and transponder at confirmation. Frame Plates must not be cut, folded or modified in any way.

PRESENTATIONS

Presentations will be conducted as soon as possible after the finish of each event. All placegetters must present to the podium immediately following their race finish.

Athletes must be presented in their correct attire (race kit) with no hats or sunglasses.

All placegetters must make themselves available for the media as directed by the Media Manager if required.

Presentations for the events will be held in the event village on the main stage.

AWARDS

1st Gold Medal and UCI Master World Champion Jersey

2nd Silver Medal

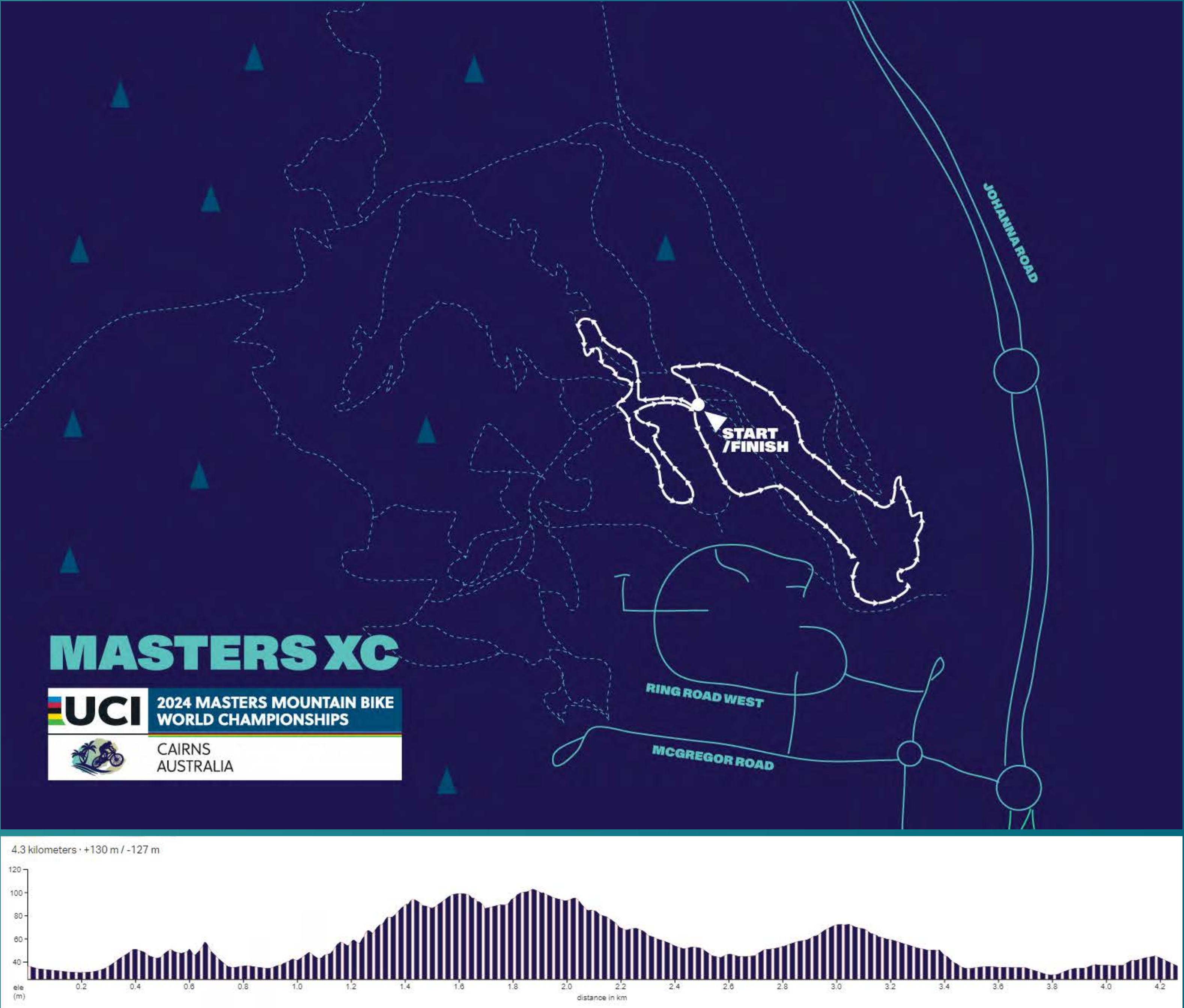
3rd Bronze Medal



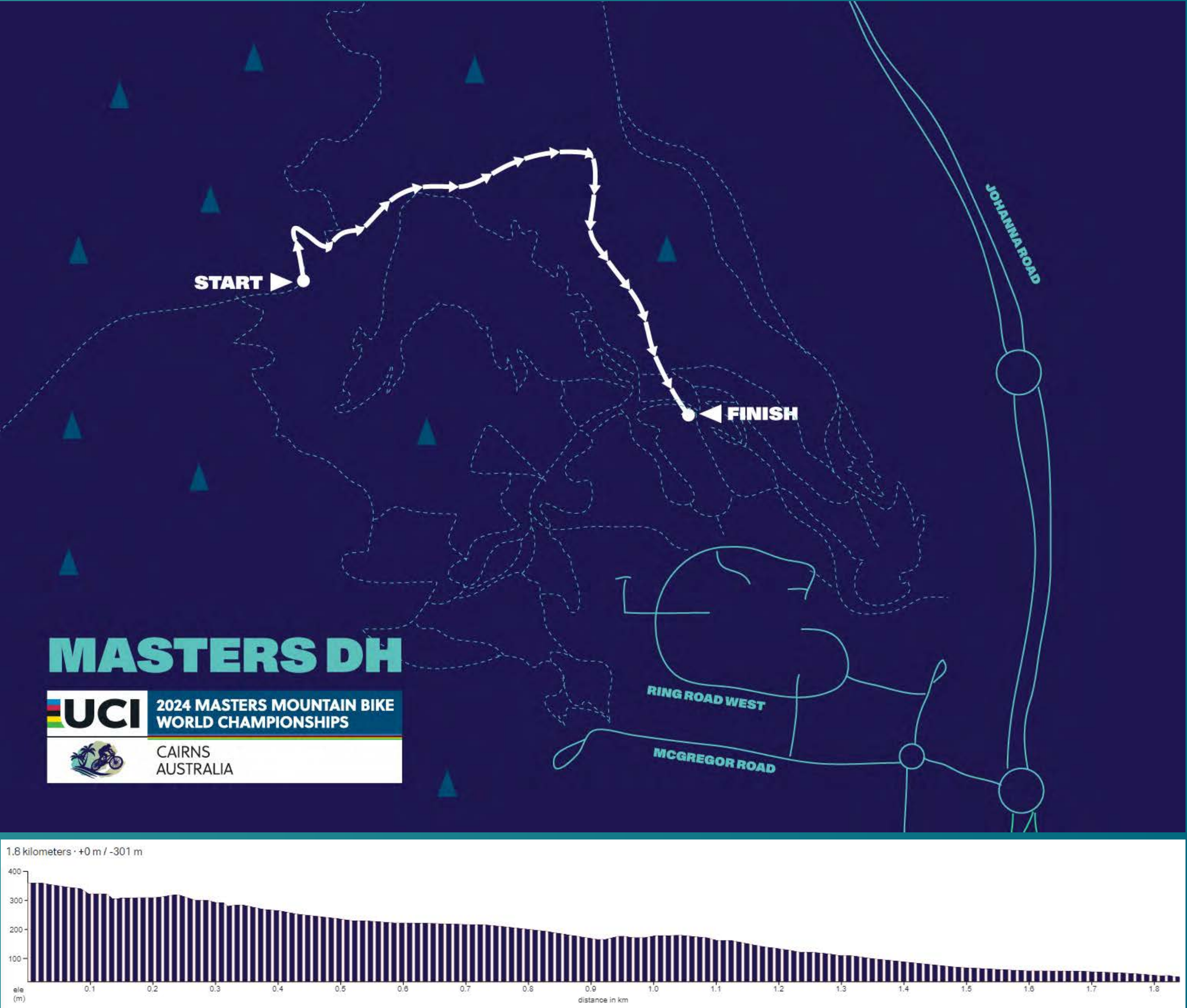
VENUE DETAILS



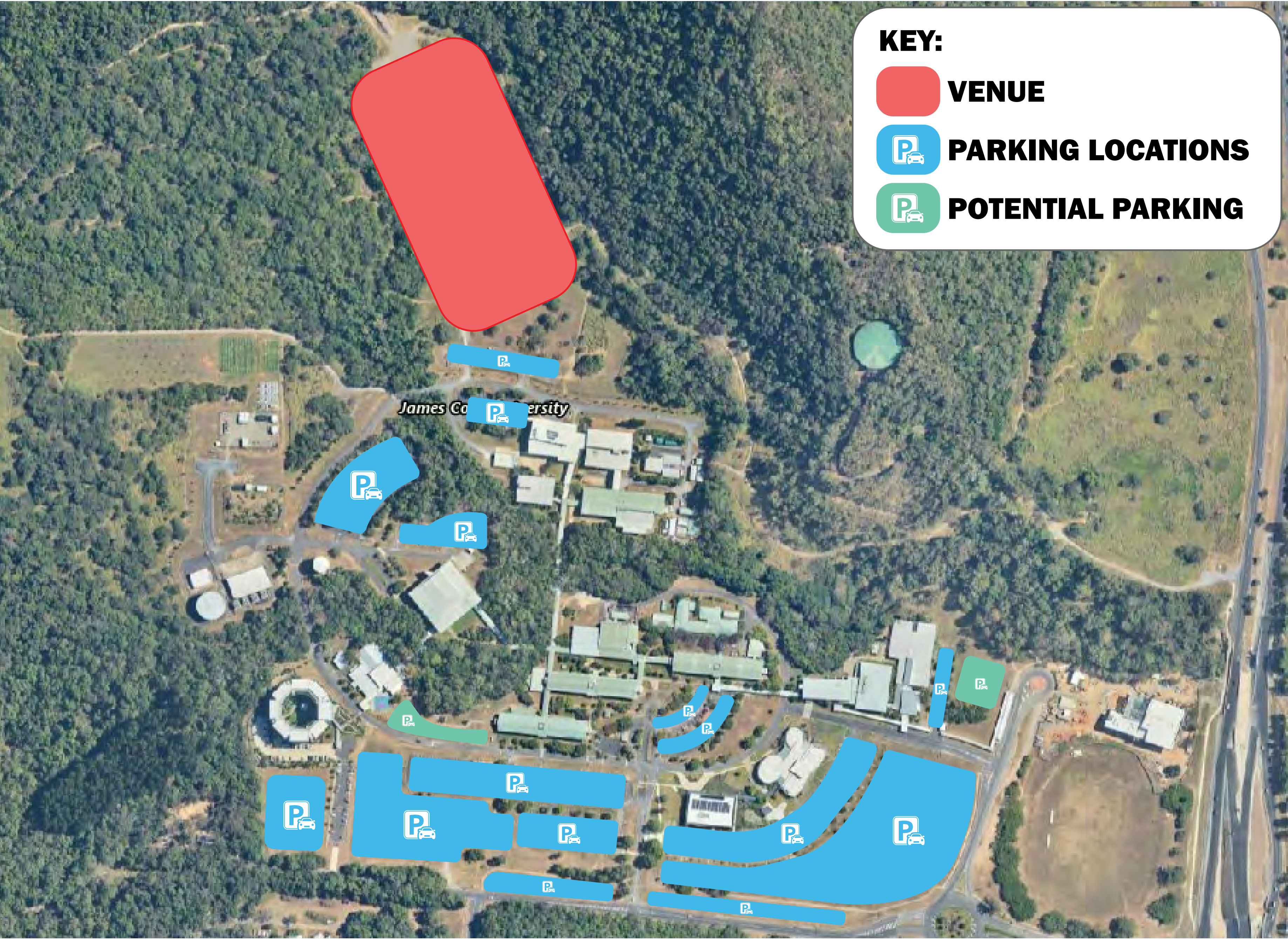
XCO



DHI



PARKING





2025 UCI MASTERS WORLD CHAMPIONSHIPS

DHI & XCO TECHNICAL GUIDE



Queensland
Government

